

Approved Glass  
Submitted by Glass Mfr

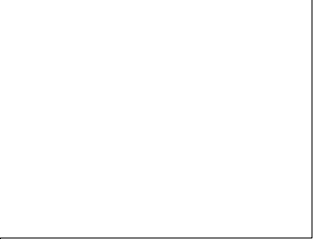
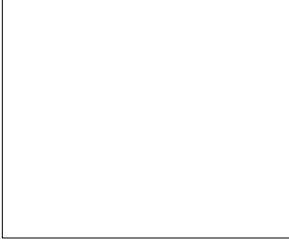
Approved Spacer  
Submitted by Spacer Mfr

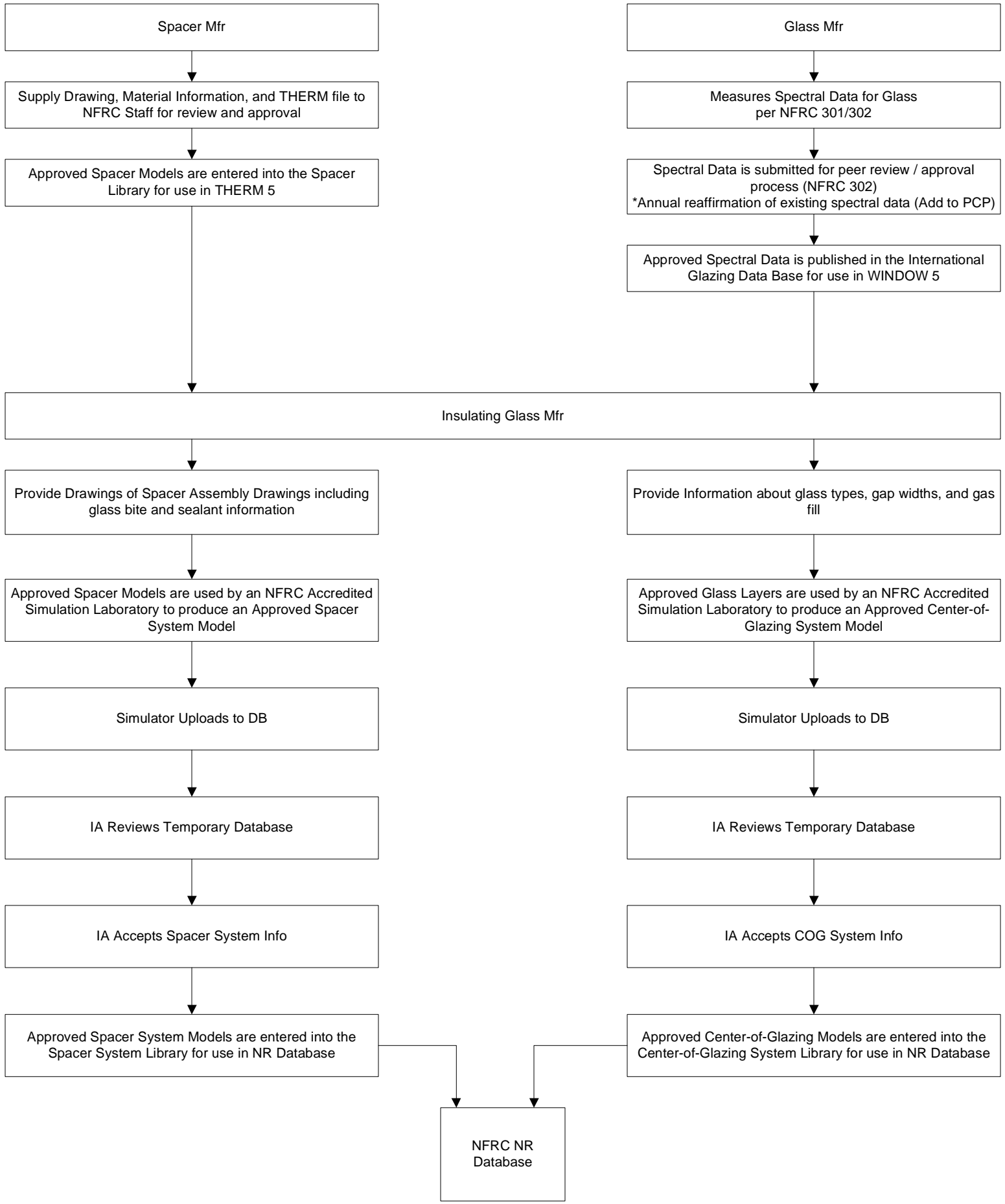
Certified Center-of-Glass System  
Submitted by Insulating Glass Mfr System Mfr

Certified Spacer System  
Submitted by Insulating Glass Mfr System Mfr

Certified Framing System  
Submitted by Framing Mfr System Mfr

Certified System  
Submitted by Responsible Party for a Label Certificate





Spacer = Physical Spacer supplied by spacer manufacturer  
 Spacer System = Spacer + Sealants + Desiccant + Location Details

Framing System Mfr



Provide Drawings, Bills-of-Materials, Material Info, IG Geometry (Location), Die Drawing to an NFRC Accredited Simulation Lab



An NFRC Accredited Simulation Laboratory produces Framing System Models

- Best Glass / Best Spacer
- Best Glass / Worst Spacer
- Worst Glass / Best Spacer
- Worst Glass / Worst Spacer

(These systems are generic)



Simulator Uploads to DB



IA Reviews Temporary Database



IA Accepts Framing System Info



Approved Framing System Models are entered into the NR Database



NFRC NR Database

Responsible Party - Entity taking responsibility for the values on the label certificate

- Manufacturers
- Glazing Contractors
- Accredited Entities
- Professional Engineers / Architects
- Building Owner

Licensed Calculation Entity

- Go to NFRC Website
- Select COG ID, Spacer System ID, Framing System ID from NR Database
- Input System Sizes and Configuration into NRFEN

Secure Label Certificate Automatically Generated and Distributed to

- IA
- Responsible Party
- NR Database

Licensed to: Responsible Party

IA Randomly reviews files and/or inspects projects based on an NFRC mandated auditing process

Training Program

- Licensed Calculation Entity
- Responsible Party

Penalties for Non-compliance

