

# WIND DATA REPORT

## Ashburnham, MA

June 2009 to August 2009

Prepared for

Massachusetts Department of Energy Resources  
100 Cambridge Street, Suite 1020  
Boston, MA 02114

by

William Batson  
James F. Manwell  
Utama Abdulwahid  
Anthony F. Ellis

November 11, 2009

Report template version 3.1.2

---

**Renewable Energy Research Laboratory**  
University of Massachusetts, Amherst  
160 Governors Drive, Amherst, MA 01003

[www.ceere.org/rerl](http://www.ceere.org/rerl) • (413) 545-4359 • [rerl@ecs.umass.edu](mailto:rerl@ecs.umass.edu)



## **NOTICE AND ACKNOWLEDGEMENTS**

This report was prepared by the Renewable Energy Research Laboratory (RERL) at the University of Massachusetts, Amherst in the course of performing work sponsored by the Massachusetts Department of Energy Resources (DOER). The opinions expressed in this report do not necessarily reflect those of the Commonwealth of Massachusetts, and reference to any specific product, service, process, or method does not constitute an implied or expressed recommendation or endorsement of it.

Further, the Commonwealth of Massachusetts, and RERL make no warranties or representations, expressed or implied, as to the fitness for particular purpose or merchantability of any product, apparatus, or service, or the usefulness, completeness, or accuracy of any processes, methods or other information contained, described, disclosed, or referred to in this report. The Commonwealth of Massachusetts, and RERL make no representation that the use of any product, apparatus, process, method, or other information will not infringe privately owned rights and will assume no liability for any loss, injury, or damage directly or indirectly resulting from, or occurring in connection with, the use of information contained, described, disclosed, or referred to in this report.

# TABLE OF CONTENTS

Notice and Acknowledgements .....	1
Table of Contents .....	2
Table of Figures .....	3
Executive Summary .....	4
SECTION 1 - Station Location .....	5
SECTION 2 - Instrumentation and Equipment .....	6
SECTION 3 - Data Summary .....	6
SECTION 4 - Graphs .....	8
Wind Speed Time Series .....	9
Wind Speed Distributions .....	9
Monthly Average Wind Speeds .....	10
Diurnal Average Wind Speeds .....	10
Turbulence Intensities .....	11
Wind Rose .....	12
SECTION 5 - Significant Meteorological Events .....	13
SECTION 6 - Data Collection and Maintenance .....	13
SECTION 7 - Data Recovery and Validation .....	13
Test Definitions .....	13
Sensor Statistics .....	14
APPENDIX A - Sensor Performance Report .....	16
Test Definitions .....	16
Sensor Statistics .....	17
APPENDIX B - Plot Data .....	18
Wind Speed Distribution Data .....	18
Monthly Average Wind Speed Data .....	19
Wind Rose Data .....	19
Diurnal Average Wind Speed Data .....	20

## TABLE OF FIGURES

Figure 1 – Site Location.....	5
Figure 2 – Wind Speed Time Series, Jun 1, 2009 – Aug 31, 2009.....	9
Figure 3 – Wind Speed Distribution, Jun 1, 2009 – Aug 31, 2009.....	9
Figure 4 – Monthly Average Wind Speed, Jun 1, 2008 – Aug 31, 2009.....	10
Figure 5 – Diurnal Average Wind Speeds, Jun 1, 2009 – Aug 31, 2009.....	10
Figure 6 – Turbulence Intensity vs. Wind Speed, Jun 1, 2009 – Aug 31, 2009 .....	11
Figure 7 – Wind Rose, Jun 1, 2009 – Aug 31, 2009.....	12

## EXECUTIVE SUMMARY

All the work presented in this Wind Data Report including installation and decommissioning of the meteorological tower and instrumentation, and the data analysis and reporting was performed by the Renewable Energy Research Laboratory (RERL) at the University of Massachusetts, Amherst.

Wind monitoring equipment was installed at the Ashburnham site in November 2008. The base of the 50 meter meteorological tower is installed 422 meters above sea level. Anemometers and wind direction vanes are installed at 38 and 49 m (128 and 160.8 ft) above the tower base. There are redundant anemometers at both heights. There is a temperature sensor installed near the base of the tower.

This report summarizes the wind data collected during the summer of 2009, between June 2009 and August 2009. The mean recorded wind speed was 4.58 m/s (10.25 mph<sup>\*</sup>) at 49 m and the prevailing wind direction was from the west. The average turbulence intensity between 10 m/s and 11 m/s at 49 m height was 0.22.

The gross data recovery percentage (the actual percentage of expected data received) was 100% and the net data recovery percentage (the percentage of expected data which passed all of the quality assurance tests) was 92.46%.

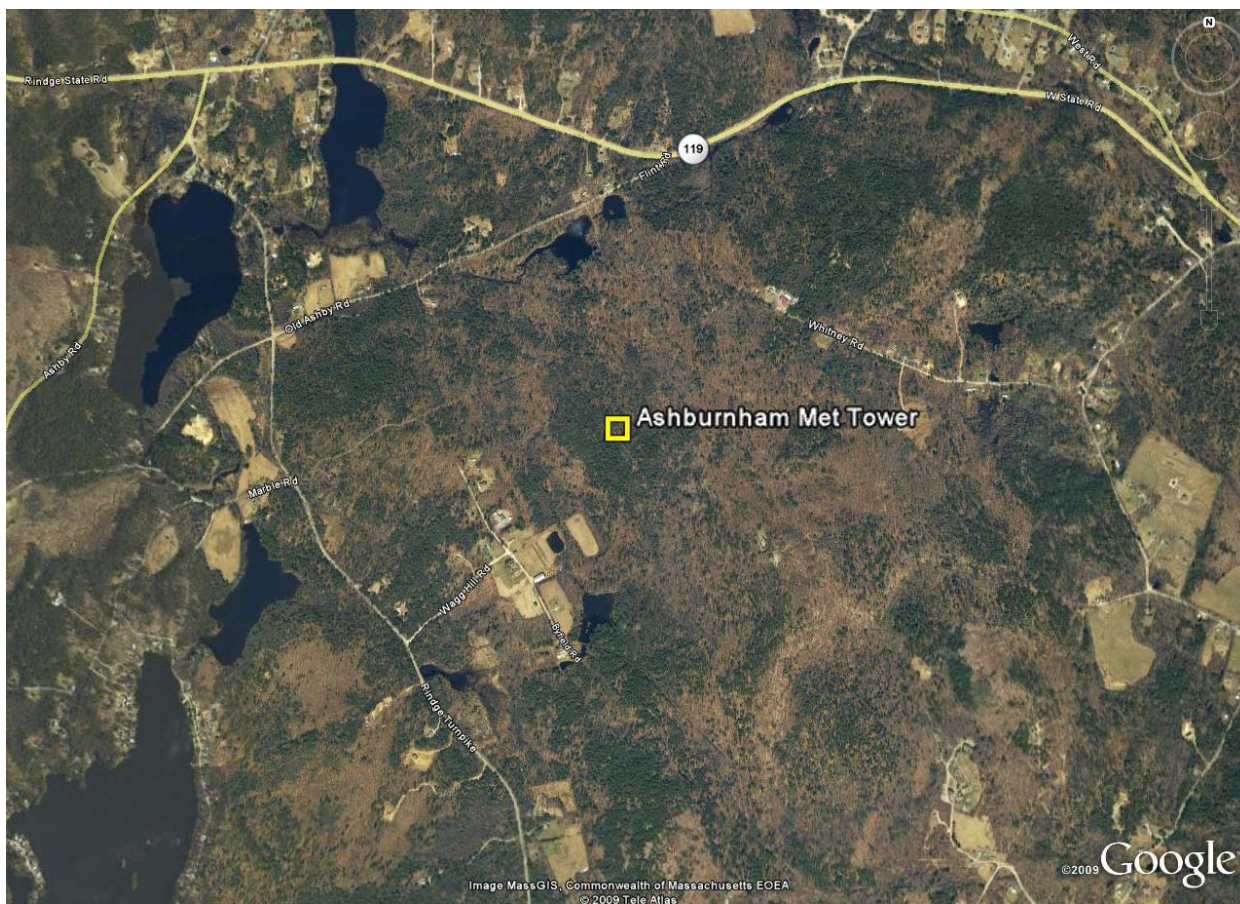
Additional information about interpreting the data presented in this report can be found in the Fact Sheet, "Interpreting Your Wind Resource Data," produced by RERL and the Massachusetts Technology Collaborative (MTC). This document is found through the RERL website:

[http://www.ceere.org/rerl/about\\_wind/RERL\\_Fact\\_Sheet\\_6\\_Wind\\_resource\\_interpretation.pdf](http://www.ceere.org/rerl/about_wind/RERL_Fact_Sheet_6_Wind_resource_interpretation.pdf)

\* 1 m/s = 2.237 mph.

## SECTION 1 - Station Location

The Ashburnham monitoring tower is located on a hill approximately 600 meters northeast from the intersection of Wag Hill and Byfield Roads in Ashburnham, MA. The 50 m (164 ft) tower is located at  $42^{\circ} 40' 37.74''$  North,  $71^{\circ} 51' 45.60''$  West. The tower base is 422 m (1,384.5 ft) above sea level. The tower is identified with a yellow box in the center of Figure 1 below.



**Figure 1 – Site Location**

## **SECTION 2 - Instrumentation and Equipment**

The wind monitoring equipment is mounted on a 50 m (164 ft) meteorological tower. The wind monitoring equipment comes from NRG systems and consists of the following items:

- NRG Symphonie data logger with internal temperature.
- 4 – NRG #40 Anemometers, standard calibration (Slope – 0.765 m/s, Offset – 0.350 m/s). Two anemometers are located at 49 m (160.8 ft) and two anemometers are located at 39 m (128 ft).
- 2 – NRG #200P Wind direction vanes. The vanes are located at 49 m (160.8 ft) and 39 m (128 ft).

The data from the Symphonie logger is sent to RERL via a cellular modem once a day. The logger samples wind speed and direction once every two seconds. These samples are combined into 10-minute averages and are put into a binary file along with the maximum, minimum and standard deviation for each 10-minute interval. The binary files are converted to ASCII text files using NRG software. These text files are then imported into a database software program where they are subjected to quality assurance tests prior to data usage.

## **SECTION 3- Data Summary**

A summary of the wind speeds and wind directions measured during the reporting period is included in Table 1. Table 1 includes the mean wind speeds measured at each measurement height, the maximum instantaneous wind speed measured at each measurement height, the prevailing wind direction measured at each measurement height, and the percentage of valid data collected. These values are provided for each month of the reporting period and for the whole reporting period.

**Table 1. Wind Speed and Direction Data Summary**

<b>Date</b>	<b>Mean Wind Speed</b>	<b>Max Wind Speed</b>	<b>Prevailing Wind Direction</b>	<b>Mean Wind Speed</b>	<b>Max Wind Speed</b>	<b>Prevailing Wind Direction</b>	<b>Net Data Recovery Percentage</b>
<b>Height Units</b>	<b>49 m [m/s]</b>	<b>49 m [m/s]</b>	<b>49 m [m/s]</b>	<b>38 m [m/s]</b>	<b>38 m [m/s]</b>	<b>38 m [m/s]</b>	<b>[%]</b>
Jun 2009	4.16	11.41	NE	3.74	10.44	NE	91.53
Jul 2009	5.01	12.21	W	4.60	11.59	W	93.86
Aug 2009	4.57	10.83	WSW	4.17	9.85	WSW	91.96
<b>Jun 2009 - Aug 2009</b>	<b>4.58</b>	<b>12.21</b>	<b>W</b>	<b>4.18</b>	<b>11.59</b>	<b>WSW</b>	<b>92.46</b>

No measurement of wind speed or direction can be perfectly accurate. Wind speed measurement errors occur due to anemometer manufacturing variability, anemometer calibration errors, the response of anemometers to turbulence and vertical air flow and due to air flows caused by the anemometer mounting system. Every effort is made to reduce the sources of these errors. Nevertheless, the values reported in this report have an expected uncertainty of about  $\pm 2\%$  or  $\pm 0.2$  m/s, whichever is greater. Wind direction measurement errors occur due to sensor measurement uncertainty, tower effects, boom alignment measurement errors and twisting of pipe sections during the raising of a pipe tower. Efforts are also made to reduce these errors, but the reported wind directions are estimated to have an uncertainty of  $\pm 5$  degrees.

A summary of the turbulence intensity measured at each measurement height during the reporting period is included in Table 2. These values are provided for each month of the reporting period and for the whole reporting period. Turbulence Intensity is calculated by dividing the standard deviation of the wind speed by the mean wind speed and is a measure of the gustiness of a wind resource. Lower turbulence results in lower mechanical loads on a wind turbine. Turbulence intensity varies with wind speed. The average turbulence intensity presented in Table 2 is the mean turbulence intensity when the wind speed at each measurement height is between 10 and 11 m/s.

**Table 2. Turbulence Intensity Data Summary**

<b>Date</b>	<b>Turbulence Intensity at 10 m/s</b>	<b>Turbulence Intensity at 10 m/s</b>
<b>Height</b>	<b>49 m</b>	<b>38 m</b>
<b>Units</b>	<b>[-]</b>	<b>[-]</b>
Jun 2009	0.25	0.28
Jul 2009	0.21	0.22
Aug 2009	0.21	0.23
<b>Jun 2009 – Aug 2009</b>	<b>0.22</b>	<b>0.24</b>

## **SECTION 4- Graphs**

This report contains several types of wind data graphs. Unless otherwise noted, each graph represents data from 1 quarter (3 months). The following graphs are included:

- Time Series – 10-minute average wind speeds are plotted against time.
- Wind Speed Distribution – A histogram plot giving the percentage of time that the wind is at a given wind speed.
- Monthly Average – A plot of the monthly average wind speed over a 12-month period. This graph shows the trends in the wind speed over the year.
- Diurnal – A plot of the average wind speed for each hour of the day.
- Turbulence Intensity – A plot of turbulence intensity as a function of wind speed. Turbulence Intensity is calculated as the standard deviation of the wind speed divided by the wind speed and is a measure of the gustiness of a wind resource. Lower turbulence results in lower mechanical loads on a wind turbine.
- Wind Rose – A plot, by compass direction showing the percentage of time that the wind comes from a given direction and the average wind speed in that direction.

Data for the wind speed histograms, monthly and diurnal average plots, and wind roses are included in APPENDIX B.

## Wind Speed Time Series

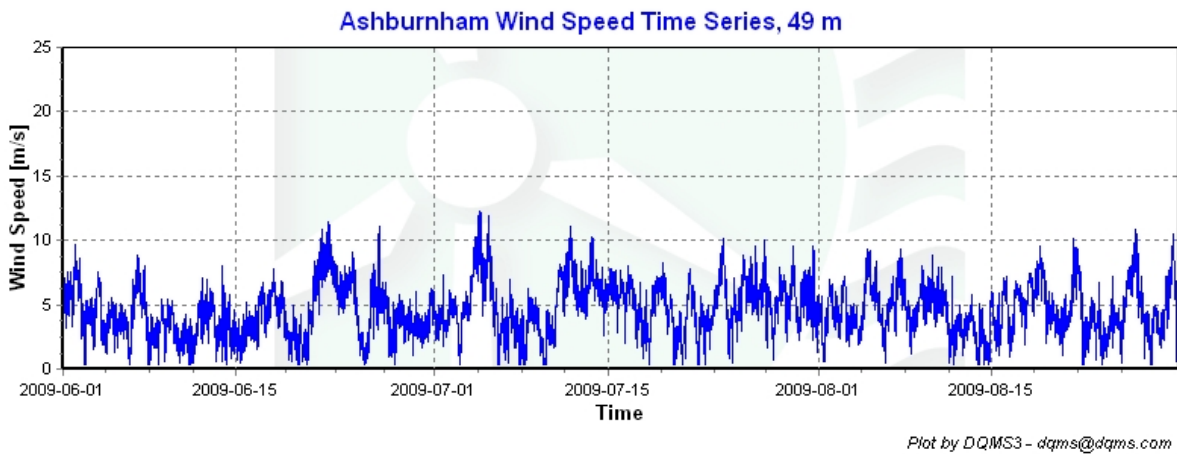


Figure 2 – Wind Speed Time Series, Jun 1, 2009 – Aug 31, 2009

## Wind Speed Distributions

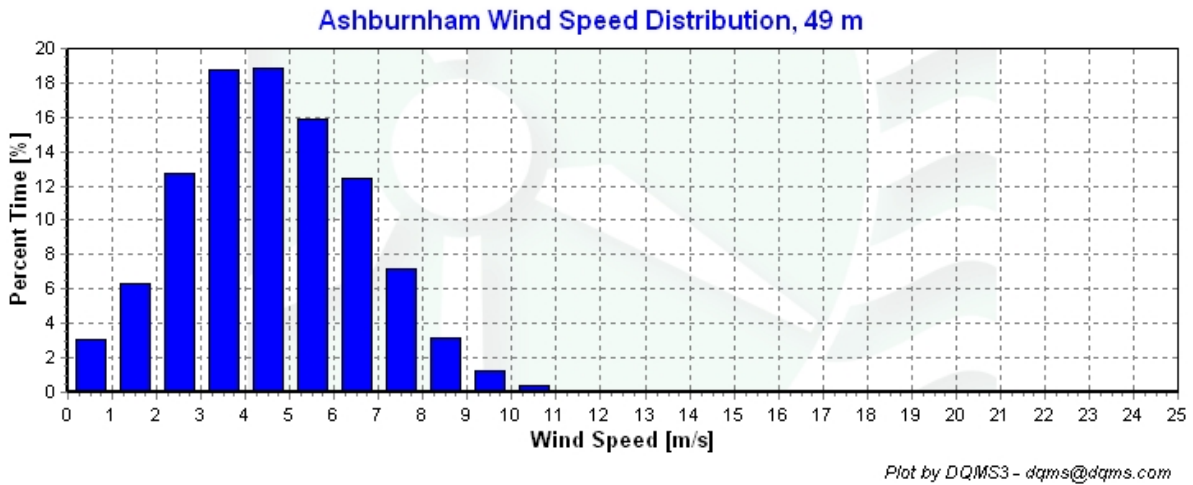


Figure 3 – Wind Speed Distribution, Jun 1, 2009 – Aug 31, 2009

## Monthly Average Wind Speeds

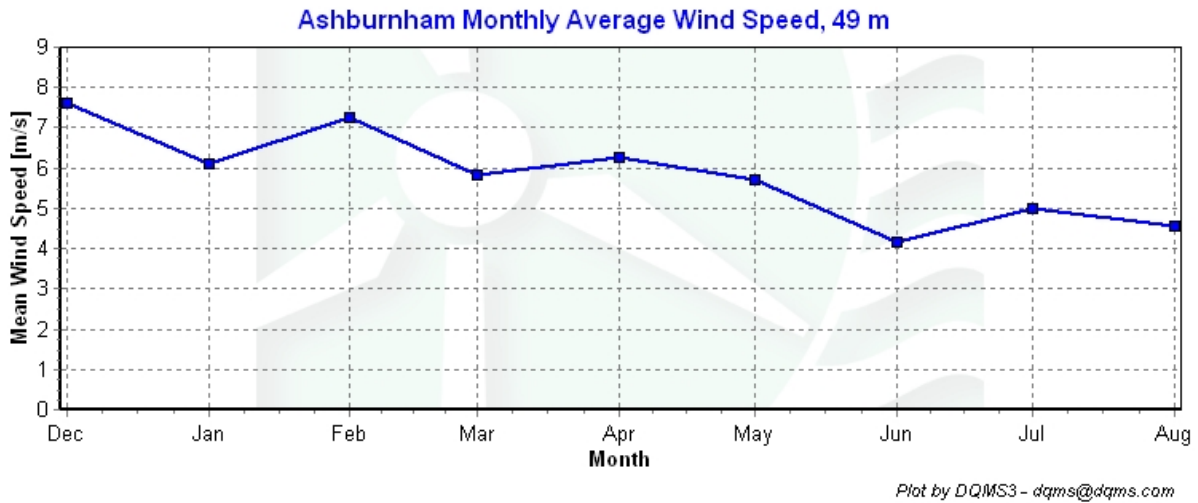


Figure 4 – Monthly Average Wind Speed, Jun 1, 2008 – Aug 31, 2009

## Diurnal Average Wind Speeds

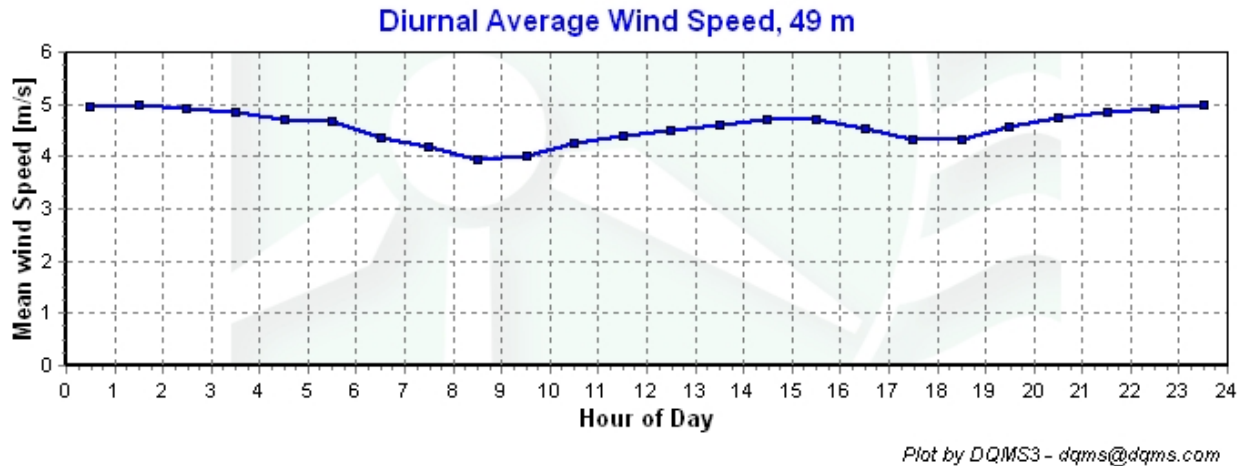
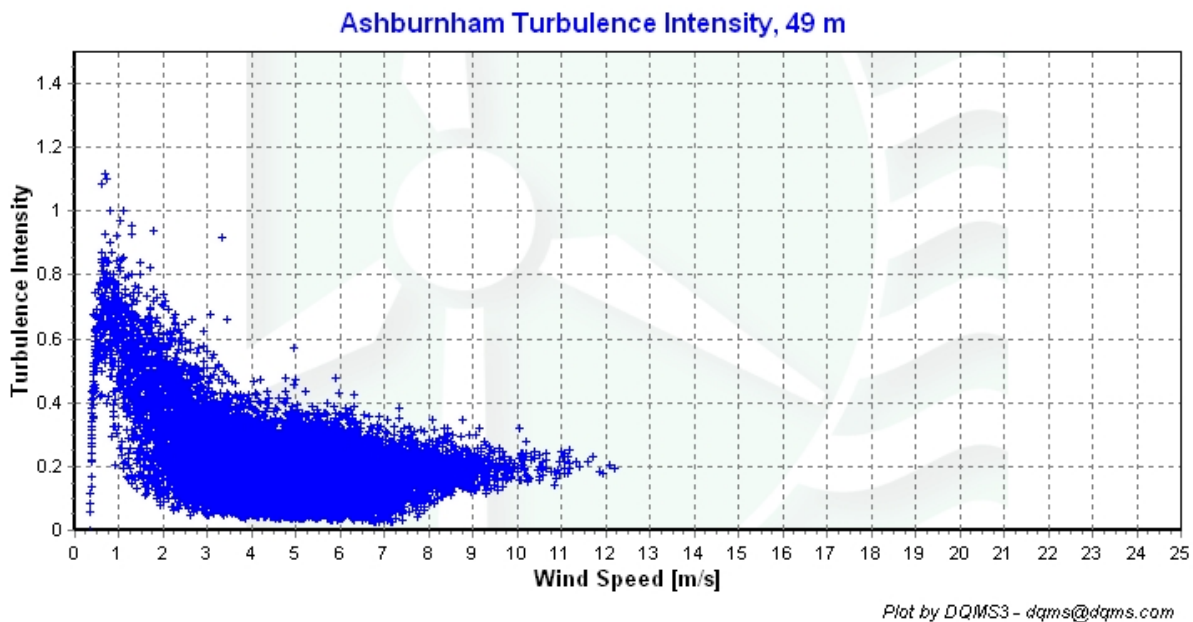


Figure 5 – Diurnal Average Wind Speeds, Jun 1, 2009 – Aug 31, 2009

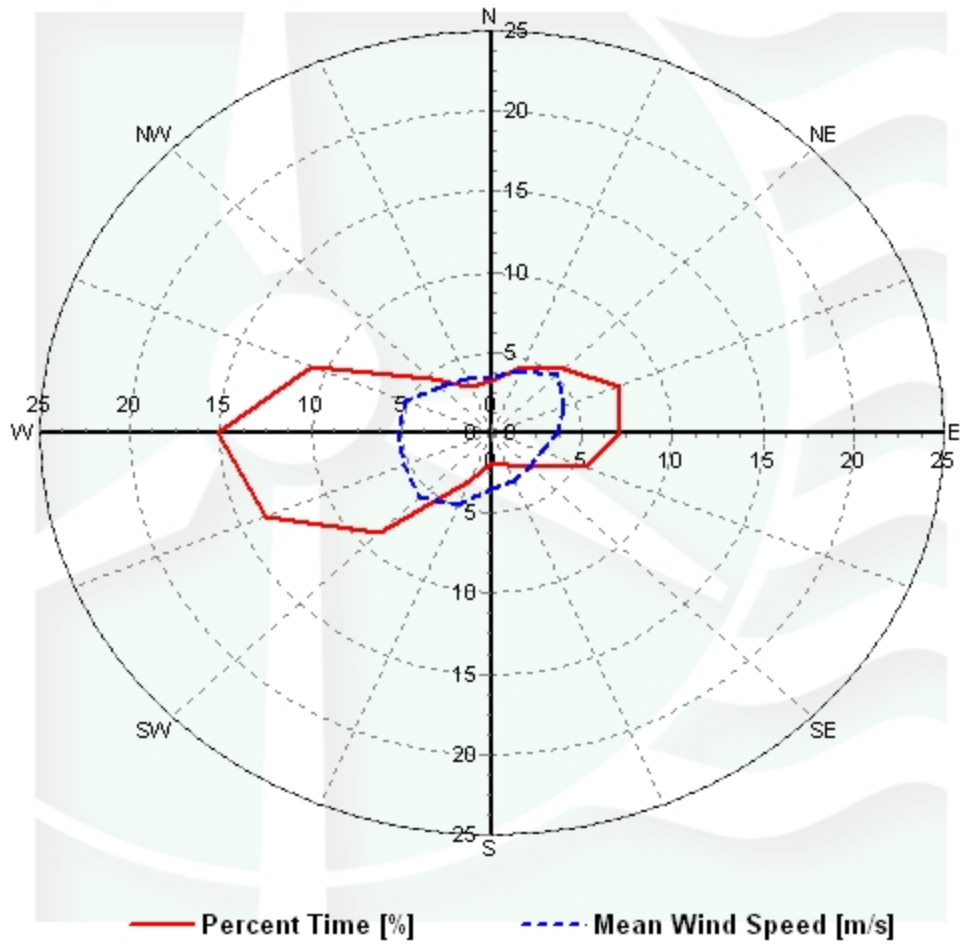
## Turbulence Intensities



**Figure 6 – Turbulence Intensity vs. Wind Speed, Jun 1, 2009 – Aug 31, 2009**

## Wind Rose

### Ashburnham Wind Rose, 49 m



Plot by DQMS3 - dqms@dqms.com

Figure 7 – Wind Rose, Jun 1, 2009 – Aug 31, 2009

## SECTION 5 - Significant Meteorological Events

There were no severe meteorological events during the reporting period. The highest recorded wind speed was 12.21 m/s (27.31 mph).

## SECTION 6 - Data Collection and Maintenance

The secondary 49 meter anemometer sustained damage during an icing event in December and began reporting wind speeds significantly different than both the primary 49 meter anemometer and the anemometers situated at 38 meters. The data from the secondary 49 meter anemometer are flagged whenever the disagreement between the two 49 m sensors exceeds the limit defined by the Compare Sensors test (Test Definitions are in Section 7). No maintenance was performed during this quarter.

## SECTION 7 - Data Recovery and Validation

All raw wind data are subjected to a series of tests and filters to weed out data that are faulty or corrupted. Definitions of these quality assurance (QA) controls are given below under Test Definitions and Sensor Statistics. These control filters were designed to automate the quality control process and used many of the previous hand-worked data sets made at UMass to affect a suitable emulation. The gross percentage of data recovered (ratio of the number of raw data points received to data points expected) and net percentage (ratio of raw data points which passed all QA control tests to data points expected) are shown below.

Gross Data Recovered [%]	100
Net Data Recovered [%]	92.46

### Test Definitions

All raw data were subjected to a series of validation tests, as described below. The sensors tested and the parameters specific to each sensor are given in the Sensor Performance Report which is included in APPENDIX A. Data which were flagged as invalid were not included in the statistics presented in this report.

**MinMax Test:** All sensors are expected to report data values within a range specified by the sensor and logger manufacturers. If a value falls outside this range, it is flagged as invalid. A data value from the sensor listed in Test Field 1 (TF1) is flagged if it is less than Factor 1 (F1) or greater than Factor 2. This test has been applied to the following sensors (as applicable): wind speed, wind speed standard deviation, wind direction, temperature, and solar insolation.

$$F1 > TF1 > F2$$

**MinMaxT Test:** This is a MinMax test for wind direction standard deviation with different ranges applied for high and low wind speeds. A wind direction standard deviation data value (TF1) is flagged either if it is less than Factor 1, if the wind speed (TF2) is less than Factor 4 and the wind direction standard deviation is greater than Factor 2, or if the wind speed is greater than or equal to Factor 4 and the wind direction standard deviation is greater than Factor 3.

$$\begin{aligned} & (TF1 < F1) \\ & \text{or } (TF2 < F4 \text{ and } TF1 > F2) \\ & \text{or } (TF2 \geq F4 \text{ and } TF1 > F3) \end{aligned}$$

**Icing Test:** An icing event occurs when ice collects on a sensor and degrades its performance. Icing events are characterized by the simultaneous measurements of near-zero standard deviation of wind direction, non-zero wind speed, and near- or below-freezing temperatures. Wind speed, wind speed standard deviation, wind direction, and wind direction standard deviation data values are flagged if the wind direction standard deviation (CF1) is less than or equal to Factor 1 (F1), the wind speed (TF1) is greater than Factor 2 (F2), and the temperature (CF2) is less than Factor 3 (F3). To exit an icing event, the wind direction standard deviation must be greater than Factor 4.

$$CF1 \leq F1 \text{ and } TF1 > F2 \text{ and } CF2 < F3$$

**CompareSensors Test:** Where primary and redundant sensors are used, it is possible to determine when one of the sensors is not performing properly. For anemometers, poor performance is characterized by low data values. Therefore, if one sensor of the pair reports values significantly below the other, the low values are flagged. At low wind speeds (Test Fields 1 and 2 less than or equal to Factor 3) wind speed data are flagged if the absolute difference between the two wind speeds is greater than Factor 1. At high wind speeds (Test Fields 1 or 2 greater than Factor 3) wind speed data are flagged if the absolute value of the ratio of the two wind speeds is greater is greater than Factor 2.

$$\begin{aligned} & [ TF1 \leq F3 \text{ and } TF2 \leq F3 \text{ and } \text{abs}(TF1 - TF2) > F1 ] \\ & \text{or } [ (TF1 > F3 \text{ or } TF2 > F3) \text{ and } (\text{abs}(1 - TF1 / TF2) > F2 \text{ or } \text{abs}(1 - TF2 / TF1) > F2) ] \end{aligned}$$

### Sensor Statistics

A summary of the results of the data collection and filtering are given in the Sensor Performance Report which is included in APPENDIX A. The following categories of information, tabulated for each sensor, are included in that report.

**Expected Data Points:** the total number of sample intervals between the start and end dates (inclusive).

**Actual Data Points:** the total number of data points recorded between the start and end dates.

**% Data Recovered:** the ratio of actual and expected data points (this is the *gross data recovered percentage*).

**Hours Out of Range:** total number of hours for which data were flagged according to MinMax and MinMaxT tests. These tests flag data which fall outside of an expected range.

**Hours of Icing:** total number of hours for which data were flagged according to Icing tests. This test uses the standard deviation of wind direction, air temperature, and wind speed to determine when sensor icing has occurred.

**Hours of Fault:** total number of hours for which data were flagged according to CompareSensors tests. These tests compare two sensors (e.g. primary and redundant anemometers installed at the same height) and flag data points where one sensor differs significantly from the other.

**% Data Good:** the filter results are subtracted from the gross data recovery percentage to yield the *net data recovered percentage*.

# APPENDIX A - Sensor Performance Report

## Test Definitions

Test Order	Test Field1	Test Field2	Test Field3	Calc Field1	Calc Field2	Test Type	Factor 1	Factor 2	Factor 3
1						TimeTest Insert	0	0	0
3	Batt2aVDC					MinMax	10.5	15	0
4	Etmp2aDEGC					MinMax	-30	60	0
5	EtmpSD2aDEGC					MinMax	-30	60	0
10	Anem49aMS					MinMax	0	90	0
11	Anem49bMS					MinMax	0	90	0
12	Anem38aMS					MinMax	0	90	0
13	Anem38bMS					MinMax	0	90	0
20	AnemSD49aMS					MinMax	0	4	0
21	AnemSD49bMS					MinMax	0	4	0
22	AnemSD38aMS					MinMax	0	4	0
23	AnemSD38bMS					MinMax	0	4	0
30	Vane49aDEG					MinMax	0	359.9	0
31	Vane38aDEG					MinMax	0	359.9	0
50	Turb49zNONE					MinMax	0	2	0
51	Turb38zNONE					MinMax	0	2	0
60	Wshr0zNONE					MinMax	0	100	0
200	VaneSD49aDEG	Anem49yMS				MinMaxT	0	100	100
201	VaneSD38aDEG	Anem38yMS				MinMaxT	0	100	100
300	Anem49aMS	AnemSD49aMS	Vane49aDEG	VaneSD49aDEG	Etmp2aDEGC	Icing	0.5	1	2
301	Anem49bMS	AnemSD49bMS	Vane49aDEG	VaneSD49aDEG	Etmp2aDEGC	Icing	0.5	1	2
302	Anem38aMS	AnemSD38aMS	Vane38aDEG	VaneSD38aDEG	Etmp2aDEGC	Icing	0.5	1	2
303	Anem38bMS	AnemSD38bMS	Vane38aDEG	VaneSD38aDEG	Etmp2aDEGC	Icing	0.5	1	2
400	Anem49aMS	Anem49bMS				CompareSensors	1	0.25	3
401	Anem38aMS	Anem38bMS				CompareSensors	1	0.25	3

### Sensor Statistics

Sensor	Expected Data Points	Actual Data Points	% Data Recovered	Hours Out of Range	Hours of Icing	Hours of Fault	% Data Good
Etmp2aDEGC	13248	13248	100	0	0	0	100
EtmpSD2aDEGC	13248	13248	100	0	0	0	100
Batt2aVDC	13248	13248	100	0	0	0	100
Anem49aMS	13248	13248	100	0	0	0	100
AnemSD49aMS	13248	13248	100	0	0	0	100
Anem49bMS	13248	13248	100	0	0	1244.833	43.622
AnemSD49bMS	13248	13248	100	0	0	1244.833	43.622
Anem38aMS	13248	13248	100	0	0	1.167	99.947
AnemSD38aMS	13248	13248	100	0	0	1.167	99.947
Anem38bMS	13248	13248	100	0	0	0.667	99.97
AnemSD38bMS	13248	13248	100	0	0	0.667	99.97
Vane49aDEG	13248	13248	100	1.167	0	0	99.947
VaneSD49aDEG	13248	13248	100	1.167	0	0	99.947
Vane38aDEG	13248	13248	100	0.833	0	0	99.962
VaneSD38aDEG	13248	13248	100	0.833	0	0	99.962
<b>Total</b>	<b>198720</b>	<b>198720</b>	<b>100</b>	<b>4</b>	<b>0</b>	<b>2493.333</b>	<b>92.46</b>

## APPENDIX B - Plot Data

### Wind Speed Distribution Data

<b>Bin Center Wind Speed [m/s]</b>	<b>Percent Time [%]</b>
0.5	3.09
1.5	6.29
2.5	12.69
3.5	18.73
4.5	18.89
5.5	15.88
6.5	12.39
7.5	7.14
8.5	3.14
9.5	1.22
10.5	0.38
11.5	0.14
12.5	0.02
13.5	0
14.5	0
15.5	0
16.5	0
17.5	0
18.5	0
19.5	0
20.5	0
21.5	0
22.5	0
23.5	0
24.5	0

### Monthly Average Wind Speed Data

<b>Month</b>	<b>49 m Mean 10 min [m/s]</b>
December	7.62
January	6.09
February	7.25
March	5.83
April	6.25
May	5.72
June	4.16
July	5.01
August	4.57

### Wind Rose Data

	<b>Jun - Aug 2009</b>	
<b>Direction</b>	<b>Percent Time [%]</b>	<b>Mean Wind Speed [m/s]</b>
<b>N</b>	3.18	3.53
<b>NNE</b>	4.40	4.11
<b>NE</b>	5.66	5.10
<b>ENE</b>	7.63	4.27
<b>E</b>	7.10	3.68
<b>ESE</b>	5.68	3.04
<b>SE</b>	2.98	2.95
<b>SSE</b>	2.18	3.21
<b>S</b>	1.88	3.44
<b>SSW</b>	3.28	4.86
<b>SW</b>	8.72	5.64
<b>WSW</b>	13.56	5.29
<b>W</b>	15.19	5.25
<b>WNW</b>	10.75	5.13
<b>NW</b>	4.71	4.04
<b>NNW</b>	3.13	3.62

### Diurnal Average Wind Speed Data

Hour of Day	Mean Wind Speed [m/s]
0	4.94
1	4.97
2	4.92
3	4.85
4	4.71
5	4.68
6	4.36
7	4.18
8	3.96
9	4.02
10	4.25
11	4.39
12	4.49
13	4.59
14	4.71
15	4.70
16	4.52
17	4.32
18	4.32
19	4.57
20	4.76
21	4.85
22	4.90
23	5.00