

# WIND DATA REPORT

## Chester, MA

September – November 2006

Prepared for

Massachusetts Technology Collaborative  
75 North Drive  
Westborough, MA 01581

by

Kai Wu  
James F. Manwell  
Anthony L. Rogers  
Anthony F. Ellis

January 16, 2007

Report template version 1.3

---

---

Renewable Energy Research Laboratory  
University of Massachusetts, Amherst  
160 Governors Drive, Amherst, MA 01003

[www.ceere.org/rerl](http://www.ceere.org/rerl) • (413) 545-4359 • [rerl@ecs.umass.edu](mailto:rerl@ecs.umass.edu)



## **NOTICE AND ACKNOWLEDGEMENTS**

This report was prepared by the Renewable Energy Research Laboratory (RERL) at the University of Massachusetts, Amherst in the course of performing work sponsored by the Renewable Energy Trust (RET), as administered by the Massachusetts Technology Collaborative (MTC), pursuant to work order number 05-1. The opinions expressed in this report do not necessarily reflect those of MTC or the Commonwealth of Massachusetts, and reference to any specific product, service, process, or method does not constitute an implied or expressed recommendation or endorsement of it.

Further, MTC, the Commonwealth of Massachusetts, and RERL make no warranties or representations, expressed or implied, as to the fitness for particular purpose or merchantability of any product, apparatus, or service, or the usefulness, completeness, or accuracy of any processes, methods or other information contained, described, disclosed, or referred to in this report. MTC, the Commonwealth of Massachusetts, and the contractor make no representation that the use of any product, apparatus, process, method, or other information will not infringe privately owned rights and will assume no liability for any loss, injury, or damage directly or indirectly resulting from, or occurring in connection with, the use of information contained, described, disclosed, or referred to in this report.

# TABLE OF CONTENTS

Notice and Acknowledgements .....	1
Table of Contents .....	2
Table of Figures .....	3
Executive Summary .....	4
SECTION 1 - Station Location .....	5
SECTION 2 - Instrumentation and Equipment .....	6
SECTION 3 - Data Collection and Maintenance .....	6
SECTION 4 - Significant Meteorological Events .....	7
SECTION 5 - Data Recovery and Validation .....	7
Test Definitions .....	8
Sensor Statistics .....	9
SECTION 6 - Data Summary .....	9
SECTION 7 - Graphs .....	10
Wind Speed Time Series .....	11
Wind Speed Distributions .....	11
Monthly Average Wind Speeds .....	12
Diurnal Average Wind Speeds .....	12
Turbulence Intensities .....	13
Wind Roses .....	14
APPENDIX A - Sensor Performance Report .....	15
Test Definitions .....	15
Sensor Statistics .....	16
APPENDIX B - Plot Data .....	17
Wind Speed Distribution Data .....	17
Monthly Average Wind Speed Data .....	17
Diurnal Average Wind Speed Data .....	18
Wind Rose Data .....	19

## TABLE OF FIGURES

Figure 1 - Map of Chester wind tower site .....	5
Figure 2 – Chester wind speed time series, September – November 2006.....	11
Figure 3 – Chester wind speed distribution, September – November 2006 .....	11
Figure 4 – Chester monthly average wind speed, May – November 2006.....	12
Figure 5 – Chester diurnal average wind speed, September – November 2006 .....	12
Figure 6 – Chester turbulence intensity, September – November 2006 .....	13
Figure 7 – Chester wind rose, September – November 2006 .....	14

## EXECUTIVE SUMMARY

All the work presented in this Wind Data Report including installation and decommissioning of the meteorological tower and instrumentation, and the data analysis and reporting was performed by the Renewable Energy Research Laboratory (RERL) at the University of Massachusetts, Amherst.

Wind monitoring equipment was first installed in Chester, MA on April 14, 2006, with data collection starting from that day through the present. Five anemometers, three vanes, a temperature sensor, and a data logger are mounted on a 40 m monitoring tower.

Data collection percentages during the three month period of September through November, 2006, were very good: the raw data recovery rate was 100%, and after quality assurance the percentage of good data was 99.08%. The average wind speed during the three Fall months was 4.33 m/s at 39 m height (9.69 mph at 128 ft.)\*. Turbulence intensity for this time period was an average of 0.26. The prevailing wind was from the Northwest overall.

Additional information about interpreting the data presented in this report can be found in the Fact Sheet, "Interpreting Your Wind Resource Data," produced by RERL and the Massachusetts Technology Collaborative (MTC). This document is found through the RERL website:

[http://www.ceere.org/rerl/about\\_wind/RERL\\_Fact\\_Sheet\\_6\\_Wind\\_resource\\_interpretation.pdf](http://www.ceere.org/rerl/about_wind/RERL_Fact_Sheet_6_Wind_resource_interpretation.pdf)

\* 1 m/s = 2.237 mph.

## SECTION 1 - Station Location

The monitoring tower is located on South Gobble Mountain, on a cleared area on the east slope that extends down to the East-South-East. The wind monitoring equipment is mounted on a 40m NRG tubular steel tower, anchored with guy lines at four directions. Site coordinates are 42° 17' 23.0 North, 72° 59' 52.3 West per the WSG84 standard (the World Geodetic System 1984, an international standard for absolute localization with earthly coordinates). See the figure below for a map of the tower location, which is at the red cross in the middle square.

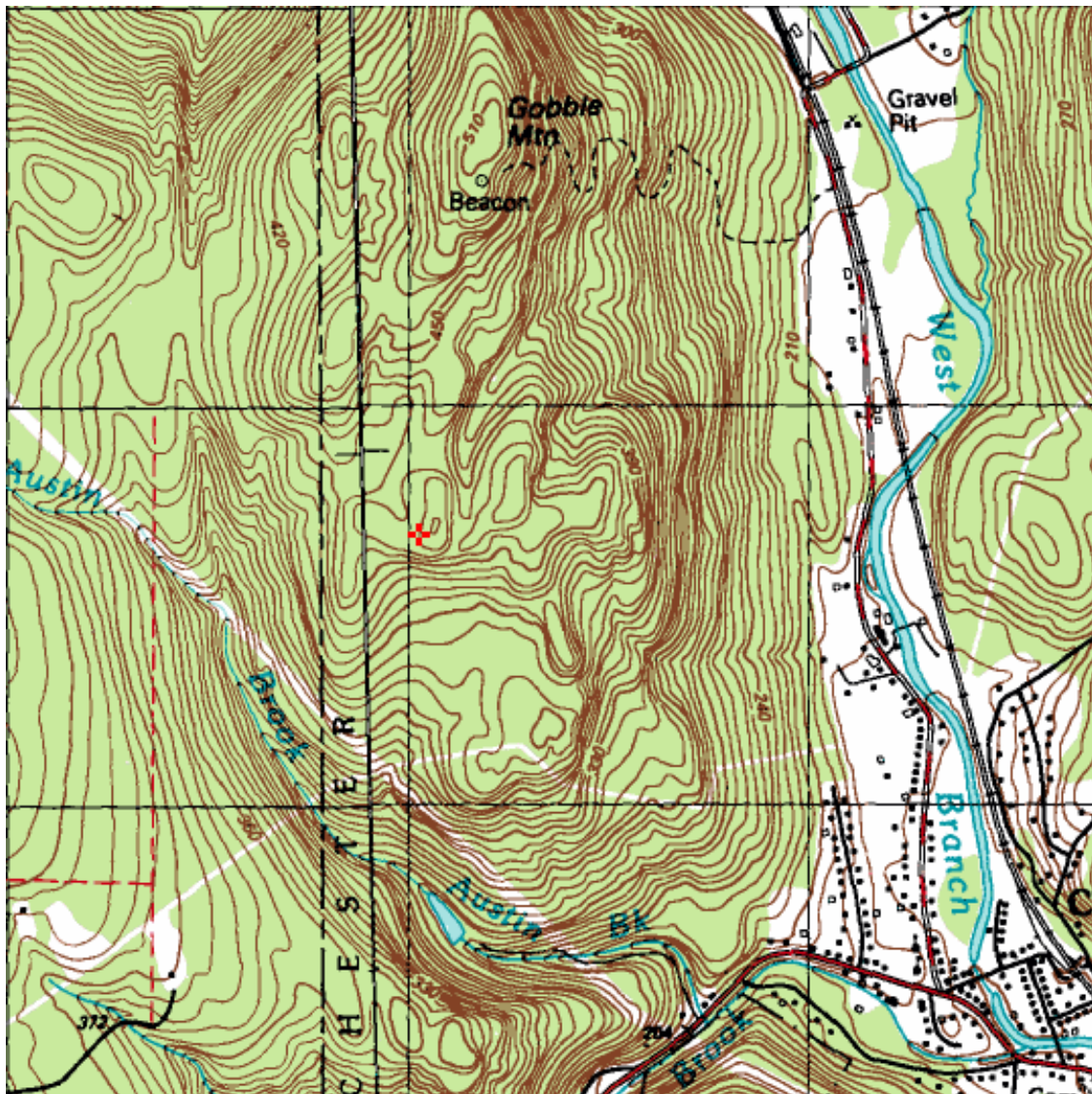


Figure 1 - Map of Chester wind tower site

## SECTION 2 - Instrumentation and Equipment

A 40m NRG tower holds five NRG anemometers on three booms: one at 25.6 m, two at 30 m, and two at 39 m. Each anemometer is 43" or further away from the tower, and 5" above its boom. Also, there are two NRG 200P Wind Vanes at 39 m, and one at 30 m.

The installed equipment comprises:

- Symphonie data logger
- NRG 110S Temperature Sensor
- Five #40 anemometers, standard calibration (slope 0.765 m/s, offset 0.350 m/s)
- Three #200P wind direction vanes
- Medium booms for vanes, 39" from tower mast
- Long side booms for anemometers, 54" from tower mast
- Lightning rod and grounding cable

## SECTION 3 - Data Collection and Maintenance

During the period of September 1<sup>st</sup> through November 31 2006, no maintenance events occurred. Data collection during this period was very good, with results summarized below:

Date	39m Mean 10 min [m/s]	39m Max [m/s]	30m Mean 10 min [m/s]	30m Max [m/s]	25m Mean 10 min [m/s]	25m Max [m/s]	39m Turbulence Intensity [ ]	39m Prevailing Wind Direction [deg]	30m Turbulence Intensity [ ]	30m Prevailing Wind Direction [deg]	25m Turbulence Intensity [ ]	25m Prevailing Wind Direction [deg]	39m Wind shear coefficient Calc b/t 39 & 30m, [ ]
2006 September	4	12.1	3.44	10.5	2.97	9.3	0.25	315	0.31	315	0.33	315	0.21
July	4.88	17	4.13	15	3.55	13.3	0.26	315	0.31	315	0.35	315	0.25
November	4.1	15.3	3.48	14.4	3.04	12.7	0.26	315	0.32	315	0.34	315	0.24
<b>Fall 06</b>	<b>4.33</b>	<b>17.0</b>	<b>3.68</b>	<b>15.0</b>	<b>3.19</b>	<b>13.3</b>	<b>0.26</b>	<b>315, NW</b>	<b>0.31</b>	<b>315</b>	<b>0.34</b>	<b>315</b>	<b>0.23</b>

## **Data Statistics Summary**

Wind data statistics in the table are reported when more than 90% of the data during the reporting period are valid. In cases when a larger amount of data are missing, the percent of the available data that are used to determine the data statistics is noted.

No measurement of wind speed can be perfectly accurate. Errors occur due to anemometer manufacturing variability, anemometer calibration errors, the response of anemometers to turbulence and vertical air flow and due to air flows caused by the anemometer mounting system. Every effort is made to reduce the sources of these errors. Nevertheless, the values reported in this report have an expected uncertainty of about  $\pm 2\%$  or  $\pm 0.2$  m/s, whichever is greater.

When data at multiple heights are available, shear coefficients,  $\alpha$ , have been determined. They can be used in the following formula to estimate the average wind speed,  $U(z)$ , at height  $z$ , when the average wind speed,  $U(z_r)$ , at height  $z_r$  is known:

$$U(z) = U(z_r) \left( \frac{z}{z_r} \right)^\alpha$$

The change in wind speed with height is a very complicated relationship related to atmospheric conditions, wind speed, wind direction, time of day and time of year. This formula November not provide the correct answer at any given site. Nevertheless the calculated shear coefficient, based on measurements at two heights, can be used to characterize the degree of increase in wind speed with height at a site.

## **SECTION 4 - Significant Meteorological Events**

The months of September and November 2006 were uneventful meteorologically.

## **SECTION 5 - Data Recovery and Validation**

All raw wind data are subjected to a series of tests and filters to weed out data that are faulty or corrupted. Definitions of these quality assurance (QA) controls are given below under Test Definitions and Sensor Statistics. These control filters were designed to automate the quality control process and used many of the previous hand-worked data sets made at UMass to affect a suitable emulation. The gross percentage of data recovered (ratio of the number of raw data points received to data points expected) and

net percentage (ratio of raw data points which passed all QA control tests to data points expected) are shown below.

Gross Data Recovered [%]	100
Net Data Recovered [%]	99.908

### **Test Definitions**

All raw data were subjected to a series of validation tests, as described below. The sensors tested and the parameters specific to each sensor are given in the Sensor Performance Report which is included in APPENDIX A. Data which were flagged as invalid were not included in the statistics presented in this report.

**MinMax Test:** All sensors are expected to report data values within a range specified by the sensor and logger manufacturers. If a value falls outside this range, it is flagged as invalid. A data value from the sensor listed in Test Field 1 (TF1) is flagged if it is less than Factor 1 (F1) or greater than Factor 2. This test has been applied to the following sensors (as applicable): wind speed, wind speed standard deviation, wind direction, temperature, and solar insolation.

$$F1 > TF1 > F2$$

**MinMaxT Test:** This is a MinMax test for wind direction standard deviation with different ranges applied for high and low wind speeds. A wind direction standard deviation data value (TF1) is flagged either if it is less than Factor 1, if the wind speed (TF2) is less than Factor 4 and the wind direction standard deviation is greater than Factor 2, or if the wind speed is greater than or equal to Factor 4 and the wind direction standard deviation is greater than Factor 3.

$$\begin{aligned} & (TF1 < F1) \\ & \text{or } (TF2 < F4 \text{ and } TF1 > F2) \\ & \text{or } (TF2 \geq F4 \text{ and } TF1 > F3) \end{aligned}$$

**Icing Test:** An icing event occurs when ice collects on a sensor and degrades its performance. Icing events are characterized by the simultaneous measurements of near-zero standard deviation of wind direction, non-zero wind speed, and near- or below-freezing temperatures. Wind speed, wind speed standard deviation, wind direction, and wind direction standard deviation data values are flagged if the wind direction standard deviation (CF1) is less than or equal to Factor 1 (F1), the wind speed (TF1) is greater than Factor 2 (F2), and the temperature (CF2) is less than Factor 3 (F3). To exit an icing event, the wind direction standard deviation must be greater than Factor 4 (F4).

$$CF1 \leq F1 \text{ and } TF1 > F2 \text{ and } CF2 < F3$$

**CompareSensors Test:** Where primary and redundant sensors are used, it is possible to determine when one of the sensors is not performing properly. For anemometers, poor performance is characterized by low data values. Therefore, if one sensor of the pair reports values significantly below the other, the low values are flagged. At low wind speeds (Test Fields 1 and 2 less than or equal to Factor 3) wind speed data are flagged if the absolute difference between the two wind speeds is greater than Factor 1. At high wind speeds (Test Fields 1 or 2 greater than Factor 3) wind speed data are flagged if the absolute value of the ratio of the two wind speeds is greater is greater than Factor 2.

$$\begin{aligned} & [ TF1 \leq F3 \text{ and } TF2 \leq F3 \text{ and } \text{abs}(TF1 - TF2) > F1 ] \\ \text{or } & [ (TF1 > F3 \text{ or } TF2 > F3) \text{ and } (\text{abs}(1 - TF1 / TF2) > F2 \text{ or } \text{abs}(1 - TF2 / TF1) > F2) ] \end{aligned}$$

### Sensor Statistics

**Expected Data Points:** the total number of sample intervals between the start and end dates (inclusive).

**Actual Data Points:** the total number of data points recorded between the start and end dates.

**% Data Recovered:** the ratio of actual and expected data points (this is the *gross data recovered percentage*).

**Hours Out of Range:** total number of hours for which data were flagged according to MinMax and MinMaxT tests. These tests flag data which fall outside of an expected range.

**Hours of Icing:** total number of hours for which data were flagged according to Icing tests. This test uses the standard deviation of wind direction, air temperature, and wind speed to determine when sensor icing has occurred.

**Hours of Fault:** total number of hours for which data were flagged according to CompareSensors tests. These tests compare two sensors (e.g. primary and redundant anemometers installed at the same height) and flag data points where one sensor differs significantly from the other.

**% Data Good:** the filter results are subtracted from the gross data recovery percentage to yield the *net data recovered percentage*.

## SECTION 6 - Data Summary

This report contains several types of wind data graphs. Here, each graph represents data from the three months of September through November, unless noted otherwise. The following graphs are included:

- Time Series – 10-minute average wind speeds are plotted against time. As seen in Figure 2, wind speeds seldom exceeded 10m/s at the Chester site during the fall months, while October was windier than other months.
- Wind Speed Distribution – A histogram plot giving the percentage of time that the wind is at a given wind speed. We can see in Figure 3 that wind speeds are mostly between 3 and 4 m/s during the Fall months.
- Monthly Average – A plot of the monthly average wind speed, eventually over a 12-month period. This graph shows the trends in the wind speed over the year. Here in Figure 4 we show the average for 7 months, May through November 2006.
- Diurnal – A plot of the average wind speed for each hour of the day. We can see in Figure 5 a clear trend of higher wind speeds during daylight hours.
- Turbulence Intensity – A plot of turbulence intensity as a function of wind speed. Turbulence Intensity is calculated as the standard deviation of the wind speed divided by the wind speed and is a measure of the gustiness of a wind resource. Lower turbulence results in lower mechanical loads on a wind turbine. Here in Figure 6, we can see that turbulence numbers roughly cluster between 0.2 and 0.3 for most wind speeds.
- Wind Rose – A plot, by compass direction showing the percentage of time that the wind comes from a given direction and the average wind speed in that direction. Here in Figure 7, a northwesterly wind direction bias is clear.

## SECTION 7- Graphs

Data for the wind speed histograms, monthly and diurnal average plots, and wind roses are included in APPENDIX B.

## Wind Speed Time Series

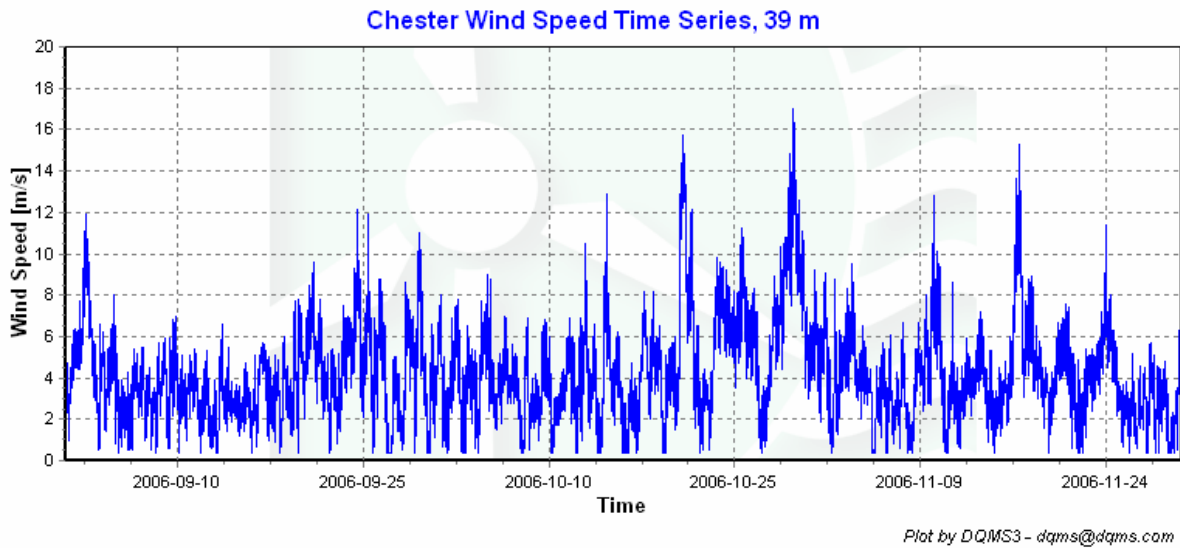


Figure 2 – Chester wind speed time series, September – November 2006

## Wind Speed Distributions

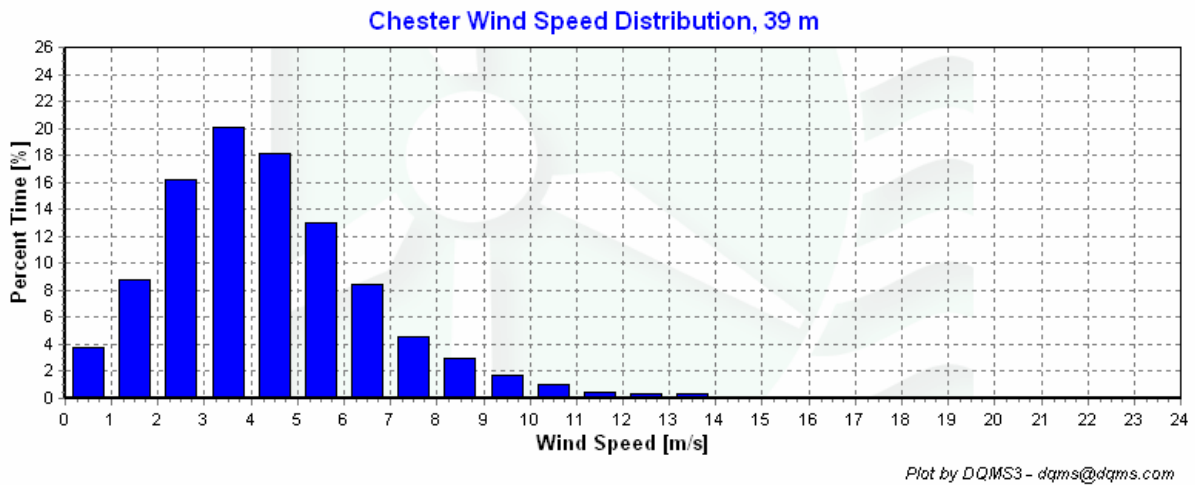


Figure 3 – Chester wind speed distribution, September – November 2006

### Monthly Average Wind Speeds

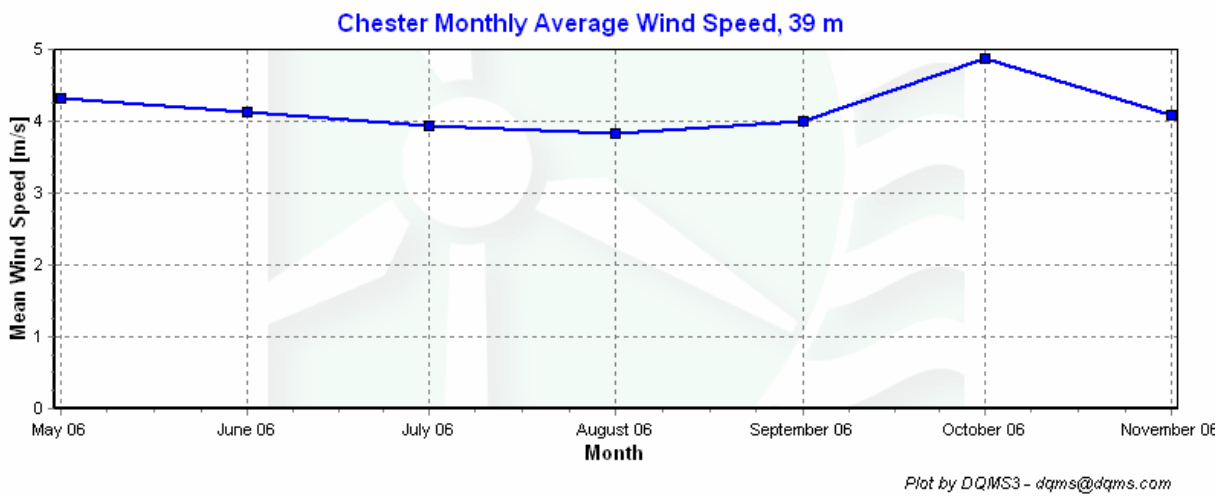


Figure 4 – Chester monthly average wind speed, May – November 2006

### Diurnal Average Wind Speeds

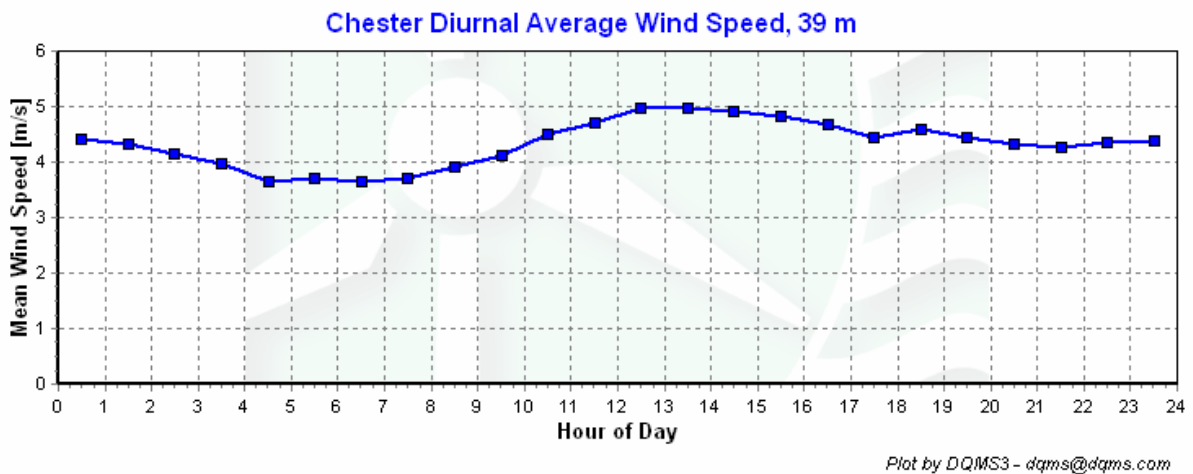
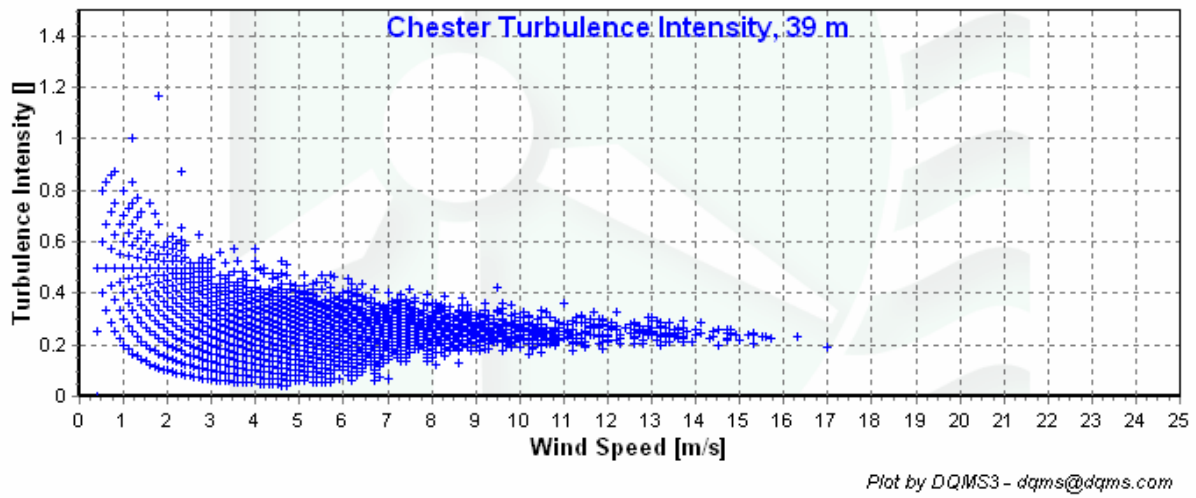


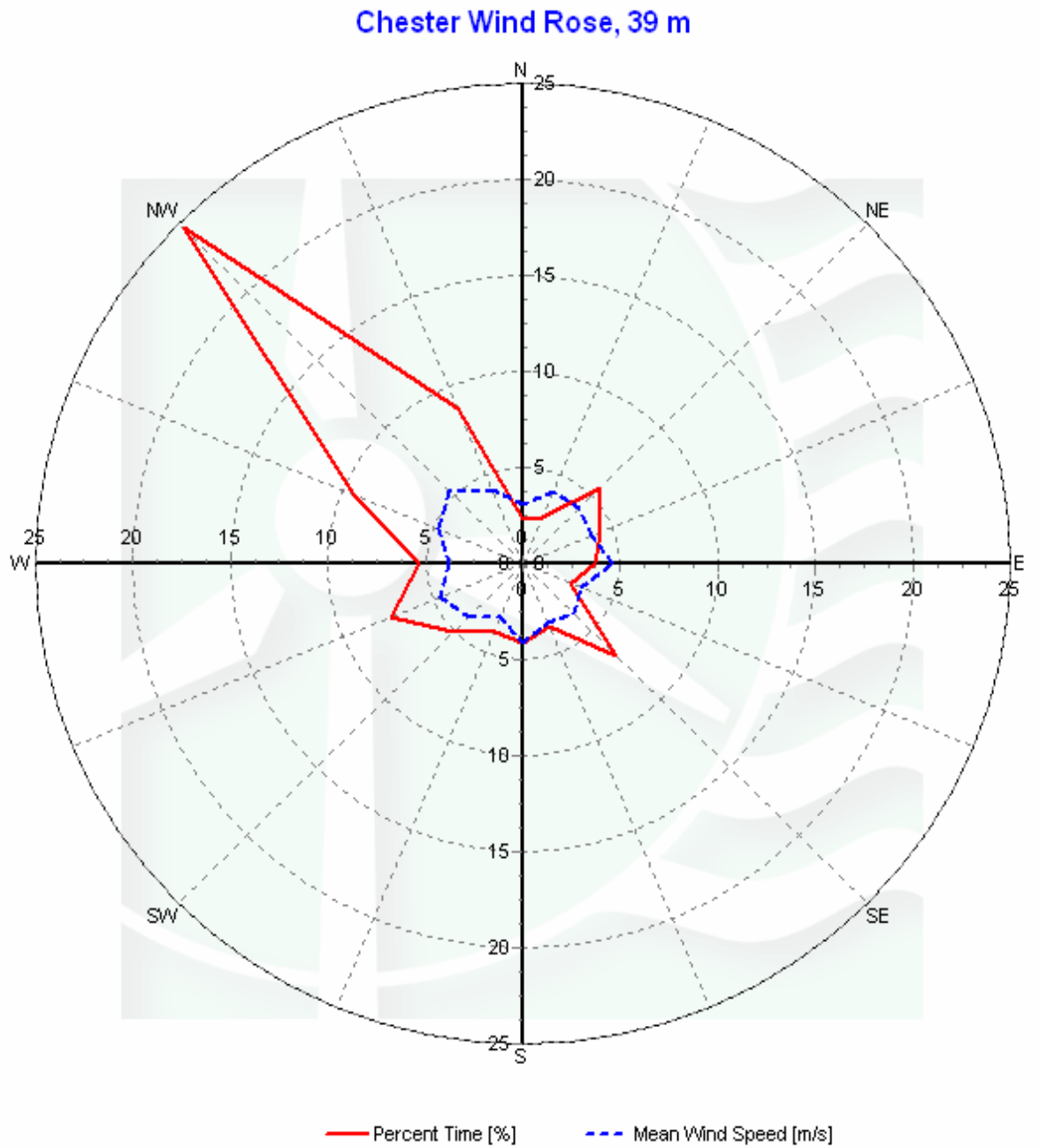
Figure 5 – Chester diurnal average wind speed, September – November 2006

## Turbulence Intensities



**Figure 6 – Chester turbulence intensity, September – November 2006**

## Wind Roses



*Plot by DQMS3 - dqms@dqms.com*

**Figure 7 – Chester wind rose, September – November 2006**

# APPENDIX A - Sensor Performance Report

## Test Definitions

Test Order	TestField1	TestField2	TestField3	CalcField1	CalcField2	TestType	Factor1	Factor2	Factor3	Factor4
1										
2	Etmp2DEGC					MinMax	-30	60		
3	EtmpSD2DEGC					MinMax	-30	60		
4	Etmpmax2DEGC					MinMax	-30	60		
5	Etmpmin2DEGC					MinMax	-30	60		
10	Anem39aMS					MinMax	0	90		
11	Anem39bMS					MinMax	0	90		
12	Anem30aMS					MinMax	0	90		
13	Anem30bMS					MinMax	0	90		
14	Anem25MS					MinMax	0	90		
20	AnemSD39aMS					MinMax	0	4	0	0
21	AnemSD39bMS					MinMax	0	4	0	0
22	AnemSD30aMS					MinMax	0	4	0	0
23	AnemSD30bMS					MinMax	0	4	0	0
24	AnemS250MS					MinMax	0	4	0	0
30	Vane39DEG					MinMax	0	359.9		
31	Vane30DEG					MinMax	0	359.9		
32	Vane25DEG					MinMax	0	359.9		
50	Turb39zNONE					MinMax	0	2		
51	Turb30zNONE					MinMax	0	2		
52	Turb25zNONE					MinMax	0	2		
60	Wshr0zNONE					MinMax	-100	100		
200	VaneSD39DEG	Anem39yMS				MinMaxT	0	100	100	10
201	VaneSD30DEG	Anem30yMS				MinMaxT	0	100	100	10
202	VaneSD25DEG	Anem25MS				MinMaxT	0	100	100	10
301	Anem39aMS	AnemSD39aMS	Vane39DEG	VaneSD39DEG	Etmp2DEGC	Icing	0.5	1	2	2
302	Anem39bMS	AnemSD39bMS	Vane39DEG	VaneSD39DEG	Etmp2DEGC	Icing	0.5	1	2	2
303	Anem30aMS	AnemSD30aMS	Vane30DEG	VaneSD30DEG	Etmp2DEGC	Icing	0.5	1	2	2
304	Anem30bMS	AnemSD30bMS	Vane30DEG	VaneSD30DEG	Etmp2DEGC	Icing	0.5	1	2	2
305	Anem25MS	AnemSD25MS	Vane25DEG	VaneSD25DEG	Etmp2DEGC	Icing	0.5	1	2	2
400	Anem39aMS	Anem39bMS				CompareSensors	1	0.35	3	0
401	Anem30aMS	Anem30bMS				CompareSensors	1	0.35	3	0
500	Amax39aMS					MinMax	0	90		
501	Amin39aMS					MinMax	0	90		

502	Amax39bMS					MinMax	0	90		
503	Amin39bMS					MinMax	0	90		
504	Amax30aMS					MinMax	0	90		
505	Amin30aMS					MinMax	0	90		
506	Amax30bMS					MinMax	0	90		
507	Amin30bMS					MinMax	0	90		
508	Amax25MS					MinMax	0	90		
509	Amin25MS					MinMax	0	90		
510	Vmax39DEG					MinMax	0	359.9		
511	Vmin39DEG					MinMax	0	359.9		
512	Vmax30DEG					MinMax	0	359.9		
513	Vmin30DEG					MinMax	0	359.9		
514	Vmax25DEG					MinMax	0	359.9		
515	Vmin25DEG					MinMax	0	359.9		

### Sensor Statistics

Sensor	Expected Data Points	Actual Data Points	% Data Recovered	Hours Out of Range	Hours of Icing	Hours of Fault	% Data Good
Etmp2DEGC	13105	13105	100	0	0	0	100
EtmpSD2DEGC	13105	13105	100	0	0	0	100
Anem39aMS	13105	13105	100	1.5	0	0	99.931
AnemSD39aMS	13105	13105	100	1.5	0	0	99.931
Anem39bMS	13105	13105	100	1.833	0	8.833	99.512
AnemSD39bMS	13105	13105	100	1.833	0	8.833	99.512
Anem30aMS	13105	13105	100	1.5	0	0	99.931
AnemSD30aMS	13105	13105	100	1.5	0	0	99.931
Anem30bMS	13105	13105	100	1.333	0	1	99.893
AnemSD30bMS	13105	13105	100	1.333	0	1	99.893
Anem25MS	13105	13105	100	0.667	0	0	99.969
AnemSD25MS	13105	13105	100	0.667	0	0	99.969
Vane39DEG	13105	13105	100	0.333	0	0	99.985
VaneSD39DEG	13105	13105	100	0.333	0	0	99.985
Vane30DEG	13105	13105	100	0.167	0	0	99.992
VaneSD30DEG	13105	13105	100	0.167	0	0	99.992
Vane25DEG	13105	13105	100	0.833	0	0	99.962
VaneSD25DEG	13105	13105	100	0.833	0	0	99.962
<b>Total</b>	<b>235890</b>	<b>235890</b>	<b>100</b>	<b>16.333</b>	<b>0</b>	<b>19.667</b>	<b>99.908</b>

## APPENDIX B - Plot Data

### Wind Speed Distribution Data

<b>Bin Center Wind Speed [m/s]</b>	<b>September - November 06 [%]</b>
0.5	3.75
1.5	8.76
2.5	16.17
3.5	20.09
4.5	18.09
5.5	13
6.5	8.48
7.5	4.61
8.5	2.92
9.5	1.76
10.5	0.98
11.5	0.47
12.5	0.34
13.5	0.35
14.5	0.15
15.5	0.06
16.5	0.01
17.5	0.01
18.5	0
19.5	0
20.5	0
21.5	0
22.5	0
23.5	0
24.5	0

### Monthly Average Wind Speed Data

<b>Date</b>	<b>39m Mean 10 min [m/s]</b>
2006 May	4.32
June	4.12
July	3.94
August	3.84

September	4
October	4.88
November	4.1
<b>Fall: September - November 06</b>	4.33

**Diurnal Average Wind Speed Data**

<b>Hour of Day</b>	<b>September - November 06 Mean Wind Speed [m/s]</b>
0	4.42
1	4.31
2	4.16
3	3.96
4	3.65
5	3.71
6	3.65
7	3.71
8	3.91
9	4.12
10	4.5
11	4.7
12	4.97
13	4.97
14	4.91
15	4.83
16	4.67
17	4.45
18	4.59
19	4.45
20	4.33
21	4.27
22	4.35
23	4.38

### Wind Rose Data

	<b>September - November 06</b>	
<b>Direction</b>	<b>Percent Time [%]</b>	<b>Mean Wind Speed [m/s]</b>
<b>N</b>	2.29	3.11
<b>NNE</b>	2.64	4.06
<b>NE</b>	5.62	4.05
<b>ENE</b>	4.28	3.79
<b>E</b>	3.74	4.59
<b>ESE</b>	2.68	3.18
<b>SE</b>	6.73	3.67
<b>SSE</b>	3.54	3.32
<b>S</b>	4.12	4.1
<b>SSW</b>	3.84	3.05
<b>SW</b>	5.02	3.89
<b>WSW</b>	7.35	4.56
<b>W</b>	5.33	3.83
<b>WNW</b>	9.39	4.73
<b>NW</b>	24.69	5.34
<b>NNW</b>	8.75	4.12