

WIND DATA REPORT

Old Rochester Regional High School Mattapoisett, Massachusetts

September 1, 2005 - November 30, 2006

Prepared for

Massachusetts Technology Collaborative
75 North Drive
Westborough, MA 01581

by

William L.W. Henson
James F. Manwell
Anthony L. Rogers
Anthony F. Ellis

January 4, 2007

Report template version 2.0

Renewable Energy Research Laboratory
University of Massachusetts, Amherst
160 Governors Drive, Amherst, MA 01003

www.ceere.org/rerl • (413) 545-4359 • rerl@ecs.umass.edu



NOTICE AND ACKNOWLEDGEMENTS

This report was prepared by the Renewable Energy Research Laboratory (RERL) at the University of Massachusetts, Amherst in the course of performing work sponsored by the Renewable Energy Trust (RET), as administered by the Massachusetts Technology Collaborative (MTC). The opinions expressed in this report do not necessarily reflect those of MTC or the Commonwealth of Massachusetts, and reference to any specific product, service, process, or method does not constitute an implied or expressed recommendation or endorsement of it.

Further, MTC, the Commonwealth of Massachusetts, and RERL make no warranties or representations, expressed or implied, as to the fitness for particular purpose or merchantability of any product, apparatus, or service, or the usefulness, completeness, or accuracy of any processes, methods or other information contained, described, disclosed, or referred to in this report. MTC, the Commonwealth of Massachusetts, and the contractor make no representation that the use of any product, apparatus, process, method, or other information will not infringe privately owned rights and will assume no liability for any loss, injury, or damage directly or indirectly resulting from, or occurring in connection with, the use of information contained, described, disclosed, or referred to in this report.

TABLE OF CONTENTS

Notice and Acknowledgements	1
Table of Contents	2
Table of Figures	3
Executive Summary	4
SECTION 1 - Station Location	5
SECTION 2 - Instrumentation and Equipment	6
SECTION 3 - Data Collection and Maintenance	7
SECTION 4 - Significant Meteorological Events	8
SECTION 5 - Data Recovery and Validation	8
Test Definitions	8
Sensor Statistics	10
SECTION 6 - Data Summary	10
SECTION 7 - Graphs	12
Wind Speed Time Series	12
Wind Speed Distributions	13
Monthly Average Wind Speeds	13
Diurnal Average Wind Speeds	14
Turbulence Intensities	14
Wind Roses	15
APPENDIX A - Sensor Performance Report	16
Test Definitions	16
Sensor Statistics	17
APPENDIX B - Plot Data	18
Wind Speed Distribution Data	18
Monthly Average Wind Speed Data	18
Diurnal Average Wind Speed Data	19
Wind Rose Data	20

TABLE OF FIGURES

Figure 1 – Topographic Map Showing ORR Site Location--Source Topozone.com.....	5
Figure 2 – Raising the Met-tower at ORR Site.....	6
Figure 3 – Wind Speed Time Series, September 1, 2006 through November 30, 2006.....	12
Figure 4 – Wind Speed Distribution, September 1, 2006 through November 30, 2006.....	13
Figure 5 – Monthly Average Wind Speed, September 1, 2006 through November 30, 2006.....	13
Figure 6 – Diurnal Average Wind Speed, September 1, 2006 through November 30, 2006	14
Figure 7 – Turbulence Intensity, September 1, 2006 through November 30, 2006	14
Figure 8 – Wind Rose, September 1, 2006 through November 30, 2006.....	15

EXECUTIVE SUMMARY

All the work presented in this Wind Data Report including installation and decommissioning of the meteorological tower and instrumentation, and the data analysis and reporting was performed by the Renewable Energy Research Laboratory (RERL) at the University of Massachusetts, Amherst.

This report covers wind data measured at a meteorological tower installed at Old Rochester Regional High School in the town of Mattapoisett, MA. Installed on May 31st, 2006, the wind monitoring station has been in continuous operation to this day. Two sets of two anemometers and one wind vane are mounted at 49 m (160.7 ft) and 38 m (124.6 ft), and an additional anemometer and vane are mounted at 20 m (65.6 ft). Reports are made on a quarterly basis; and this report is the second such report for ORR.

The season covered by this quarterly report is September 2006 – November 2006 (fall quarter). The mean recorded wind speed for this quarter was 4.88 m/s (10.9 mph)¹ and the prevailing wind direction was from the southwest. The gross data recovery percentage (the actual percentage of expected data received) was 99.4% and the net data recovery percentage (the percentage of expected data which passed all of the quality assurance tests) was 98.7%.

Additional information about interpreting the data presented in this report can be found in the Fact Sheet, “Interpreting Your Wind Resource Data,” produced by RERL and the Massachusetts Technology Collaborative (MTC). This document is found through the RERL website:

http://www.ceere.org/rerl/about_wind/RERL_Fact_Sheet_6_Wind_resource_interpretation.pdf

* 1 m/s = 2.237 mph.

¹ 1m/s=2.237 mph

SECTION 1 - Station Location

The ORR site is located near the Old Rochester Regional High School in Mattapoisett, MA. Latitude and Longitude are $41^{\circ} 40.59'N$ and $70^{\circ} 46.94'W$, respectively, using the NAD 83 datum. Figure 1 marks the site on a topographic map.

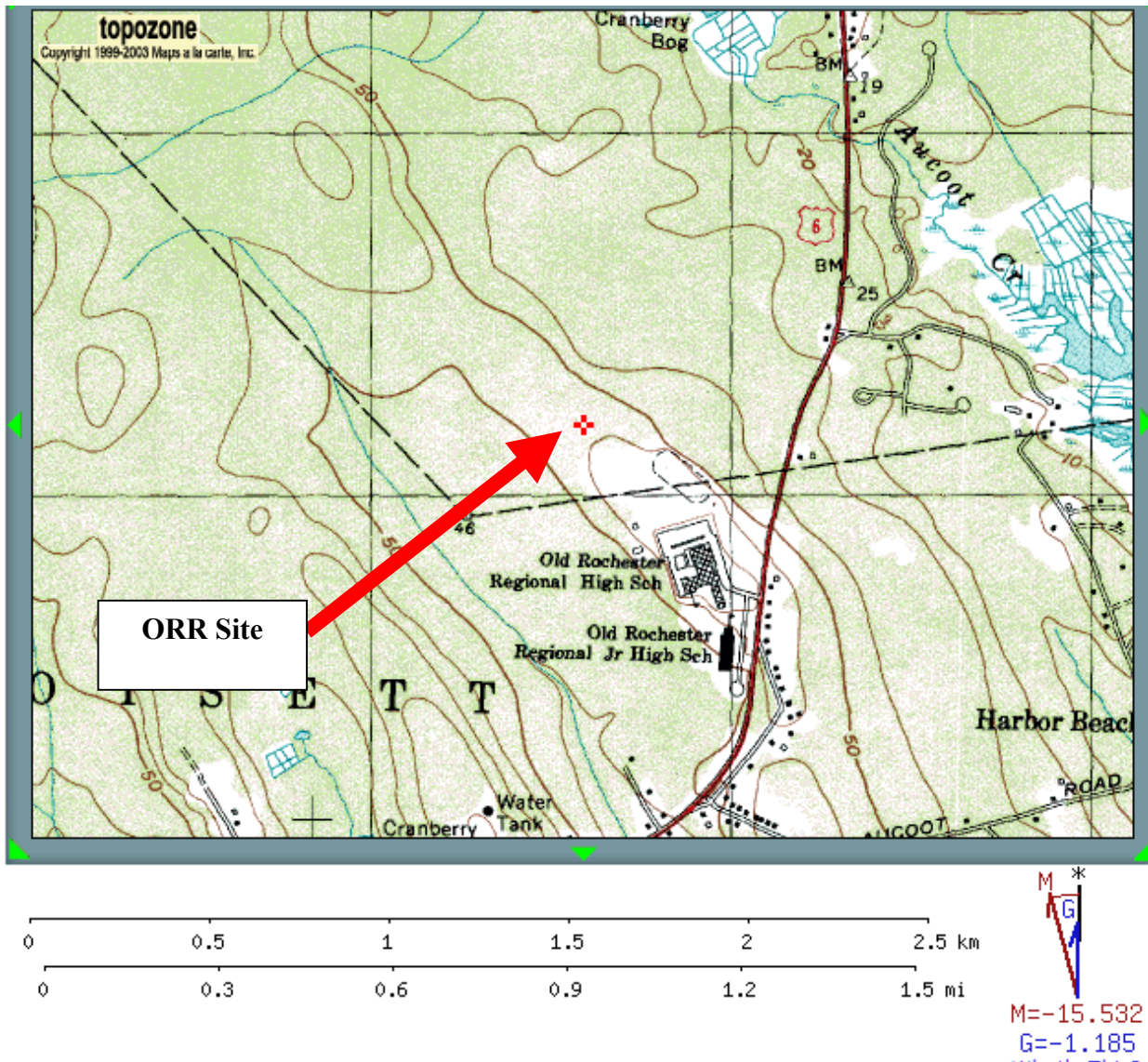


Figure 1 – Topographic Map Showing ORR Site Location--Source Topozone.com

SECTION 2 - Instrumentation and Equipment

The wind monitoring equipment is mounted on a 50 m (164.0 ft) NRG tower. All other monitoring equipment comes from NRG Systems, and consists of the following items:

- Symphonie Data Logger
- Electrical enclosure box
- 5 – #40 Anemometers, standard calibration (Slope - 0.765 m/s, Offset – 0.350 m/s). Two anemometers are located at 49 m (160.7 ft), two at 38 m(124.6 ft) and one at 20 m (65.6 ft).
- 3 - #200P Wind direction vanes. They are located at heights of 49 m (160.7 ft), 38 m(124.6 ft) and 20 m (65.6 ft) each.
- 5 – Sensor booms, 54” length
- Lightning rod and grounding cable
- Shielded sensor wire



Figure 2 – Raising the Met-tower at ORR Site

The data from the Symphonie logger is mailed to the Renewable Energy Research Laboratory at the University of Massachusetts, Amherst on a regular basis. The logger samples wind speed and direction once every two seconds. These data are then combined into 10-minute averages and, along with the standard deviation for those 10-minute periods, are put into a binary file. These binary files are converted to ASCII text files using the NRG software BaseStation®. These text files are then imported into a database software program where they are subjected to quality assurance (QA) tests prior to using the data.

SECTION 3 - Data Collection and Maintenance

The following maintenance/equipment problems occurred during the report period, and the following corrective actions taken:

- One half-day's worth of data (from 11/03 to 11/04) is missing. Records indicate that the RERL did not receive this data.

Data Statistics Summary

Date	Mean Wind Speed	Max Wind Speed	Turbulence Intensity	Prevailing Wind Direction	Mean Wind Speed	Max Wind Speed	Turbulence Intensity	Prevailing Wind Direction	Mean Wind Speed	Max Wind Speed	Turbulence Intensity	Prevailing Wind Direction	Wind Shear Coefficient
Height units	49 m, [m/s]	49 m, [m/s]	49 m, []	49 m, []	38 m, [m/s]	38 m, [m/s]	38 m, []	38 m, []	20 m, [m/s]	20 m, [m/s]	20 m, []	20 m, []	49m--38m []
Sept 2006	4.55	10.71	0.18	SW	3.98	9.59	0.2	SW	2.26	7.87	0.4	SW	0.52
Oct 2006	5.49	16.44	0.2	SW	4.78	14.57	0.23	SW	3	11.5	0.39	WNW	0.59
Nov 2006	4.59	13.31	0.2	SSW	3.96	11.91	0.23	SSW	2.35	9.44	0.4	SW	0.6
Sept – Nov '06	4.88	16.44	0.19	SW	4.25	14.57	0.22	SW	2.54	11.5	0.4	W	0.57

Wind data statistics in the table are reported when more than 90% of the data during the reporting period are valid. In cases when a larger amount of data are missing, the percent of the available data that are used to determine the data statistics is noted.

No measurement of wind speed can be perfectly accurate. Errors occur due to anemometer manufacturing variability, anemometer calibration errors, the response of anemometers to turbulence and vertical air flow and due to air flows caused by the anemometer mounting system. Every effort is made to reduce the sources of these errors. Nevertheless, the values reported in this report have an expected uncertainty of about $\pm 2\%$ or ± 0.2 m/s, whichever is greater.

When data at multiple heights are available, shear coefficients, α , have been determined—in this case from the anemometry located at 49 m and 38 m. They can be used in the following formula to estimate the average wind speed, $U(z)$, at height z , when the average wind speed, $U(z_r)$, at height z_r is known:

$$U(z) = U(z_r) \left(\frac{z}{z_r} \right)^\alpha$$

The change in wind speed with height is a very complicated relationship related to atmospheric conditions, wind speed, wind direction, time of day and time of year. This formula may not provide the correct answer at any given site. Nevertheless the calculated shear coefficient, based on measurements at two heights, can be used to characterize the degree of increase in wind speed with height at a site.

SECTION 4 - Significant Meteorological Events

Except for a storm with high winds over a three-day period starting October 27th, there were no major meteorological events that would have caused notable fluctuations in wind speed measurements during the quarter.

Sources: <http://www.weather.gov/climate/index.php?wfo=box>,
http://www.wunderground.com/history/airport/KEWB/2006/10/1/MonthlyHistory.html?req_city=NA&req_state=NA&req_statename=NA

SECTION 5 - Data Recovery and Validation

All raw wind data are subjected to a series of tests and filters to weed out data that are faulty or corrupted. Definitions of these quality assurance (QA) controls are given below under Test Definitions and Sensor Statistics. These control filters were designed to automate the quality control process and used many of the previous hand-worked data sets made at UMass to affect a suitable emulation. The gross percentage of data recovered (ratio of the number of raw data points received to data points expected) and net percentage (ratio of raw data points which passed all QA control tests to data points expected) are shown below.

Gross Data Recovered [%]	99.405%
Net Data Recovered [%]	98.678%

Test Definitions

All raw data were subjected to a series of validation tests, as described below. The sensors tested and the parameters specific to each sensor are given in the Sensor

Performance Report which is included in APPENDIX A. Data which were flagged as invalid were not included in the statistics presented in this report.

MinMax Test: All sensors are expected to report data values within a range specified by the sensor and logger manufacturers. If a value falls outside this range, it is flagged as invalid. A data value from the sensor listed in Test Field 1 (TF1) is flagged if it is less than Factor 1 (F1) or greater than Factor 2. This test has been applied to the following sensors (as applicable): wind speed, wind speed standard deviation, wind direction, temperature, and solar insolation.

$$F1 > TF1 > F2$$

MinMaxT Test: This is a MinMax test for wind direction standard deviation with different ranges applied for high and low wind speeds. A wind direction standard deviation data value (TF1) is flagged either if it is less than Factor 1, if the wind speed (TF2) is less than Factor 4 and the wind direction standard deviation is greater than Factor 2, or if the wind speed is greater than or equal to Factor 4 and the wind direction standard deviation is greater than Factor 3.

$$\begin{aligned} & (TF1 < F1) \\ & \text{or } (TF2 < F4 \text{ and } TF1 > F2) \\ & \text{or } (TF2 \geq F4 \text{ and } TF1 > F3) \end{aligned}$$

Icing Test: An icing event occurs when ice collects on a sensor and degrades its performance. Icing events are characterized by the simultaneous measurements of near-zero standard deviation of wind direction, non-zero wind speed, and near- or below-freezing temperatures. Wind speed, wind speed standard deviation, wind direction, and wind direction standard deviation data values are flagged if the wind direction standard deviation (CF1) is less than or equal to Factor 1 (F1), the wind speed (TF1) is greater than Factor 2 (F2), and the temperature (CF2) is less than Factor 3 (F3). To exit an icing event, the wind direction standard deviation must be greater than Factor 4 (F4).

$$CF1 \leq F1 \text{ and } TF1 > F2 \text{ and } CF2 < F3$$

CompareSensors Test: Where primary and redundant sensors are used, it is possible to determine when one of the sensors is not performing properly. For anemometers, poor performance is characterized by low data values. Therefore, if one sensor of the pair reports values significantly below the other, the low values are flagged. At low wind speeds (Test Fields 1 and 2 less than or equal to Factor 3) wind speed data are flagged if the absolute difference between the two wind speeds is greater than Factor 1. At high wind speeds (Test Fields 1 or 2 greater than Factor 3) wind speed data are flagged if the absolute value of the ratio of the two wind speeds is greater is greater than Factor 2.

$$\begin{aligned} & [TF1 \leq F3 \text{ and } TF2 \leq F3 \text{ and } \text{abs}(TF1 - TF2) > F1] \\ & \text{or } [(TF1 > F3 \text{ or } TF2 > F3) \text{ and } (\text{abs}(1 - TF1 / TF2) > F2 \text{ or } \text{abs}(1 - TF2 / TF1) > F2)] \end{aligned}$$

Sensor Statistics

Expected Data Points: the total number of sample intervals between the start and end dates (inclusive).

Actual Data Points: the total number of data points recorded between the start and end dates.

% Data Recovered: the ratio of actual and expected data points (this is the *gross data recovered percentage*).

Hours Out of Range: total number of hours for which data were flagged according to MinMax and MinMaxT tests. These tests flag data which fall outside of an expected range.

Hours of Icing: total number of hours for which data were flagged according to Icing tests. This test uses the standard deviation of wind direction, air temperature, and wind speed to determine when sensor icing has occurred.

Hours of Fault: total number of hours for which data were flagged according to CompareSensors tests. These tests compare two sensors (e.g. primary and redundant anemometers installed at the same height) and flag data points where one sensor differs significantly from the other.

% Data Good: the filter results are subtracted from the gross data recovery percentage to yield the *net data recovered percentage*.

SECTION 6 - Data Summary

This report contains several types of wind data graphs. Unless otherwise noted, each graph represents data from 1 quarter (3 months). The following graphs are included:

- Time Series – 10-minute average wind speeds are plotted against time for all data starting on September 1, 2006 in Figure 3. This plot presents data at 49 meters.
- Wind Speed Distribution – A histogram plot giving the percentage of time that the wind is at a given wind speed. Figure 4 shows that the wind speeds ranged between 4 and 5 m/s (8.9 and 11.2 mph) approximately 24% of the time. This plot presents data at 49 meters.
- Monthly Average Wind Speeds – This plot shows the trends in the mean monthly wind speed at a height of 49 m. This graph shows the trends in the wind speed over the year. The monthly average wind speed plot is shown in Figure 5.

- Diurnal – A plot of the average wind speed for each hour of the day. Figure 6 shows that the hourly average varied between 4.5 and 5.5 m/s (8.9 and 11.2 mph), with the highest average speeds in the afternoon. This plot presents data at 49 meters.
- Turbulence Intensity – Figure 7 is a plot of turbulence intensity as a function of wind speed. Turbulence Intensity is calculated as the standard deviation of the wind speed divided by the wind speed and is a measure of the gustiness of a wind resource. Lower turbulence results in lower mechanical loads on a wind turbine. In general, turbulence intensities range from 0.1 to 0.4; for ORR, the average turbulence intensity was 0.19—well within the normal range of average turbulence intensities. This plot presents data at 49 meters.
- Wind Rose – A plot, by compass direction showing the percentage of time that the wind comes from a given direction and the average wind speed in that direction. Figure 8 shows the prevailing direction from the southwest. The wind blew from the southwest approximately 12% of the time with a mean wind speed of 5 m/s (11.2mph). This plot presents data at 49 meters.

SECTION 7- Graphs

Data for the wind speed histograms, monthly and diurnal average plots, and wind roses are included in APPENDIX B.

Wind Speed Time Series

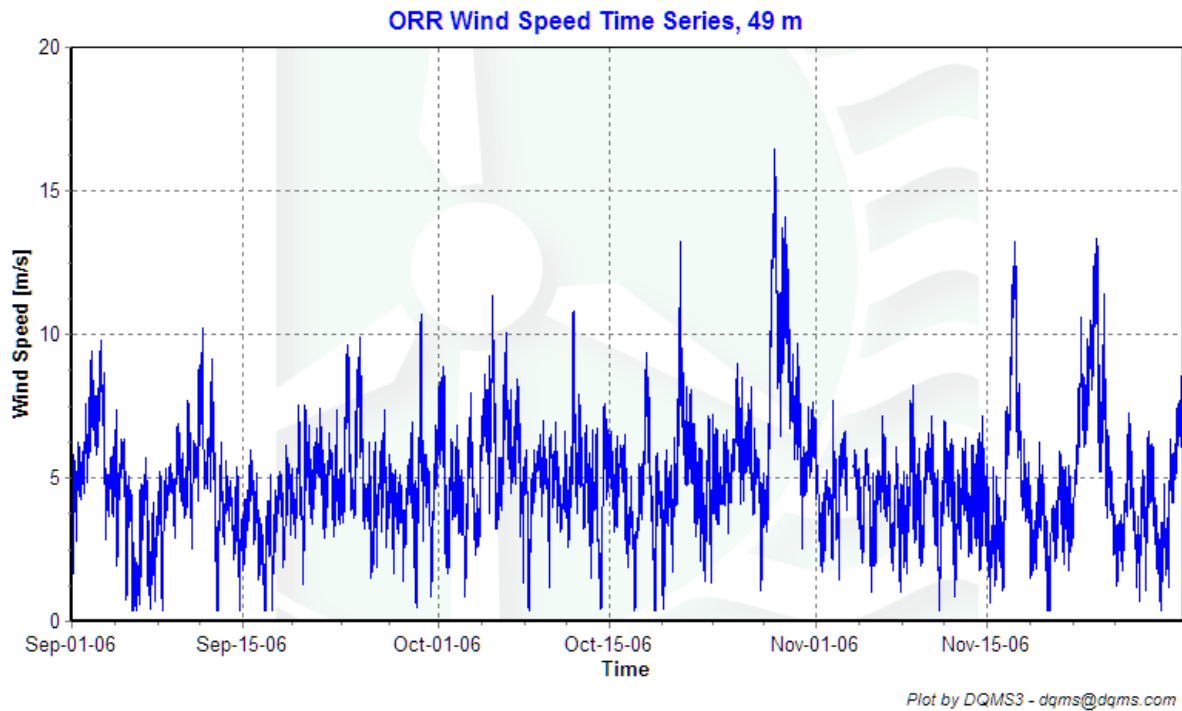
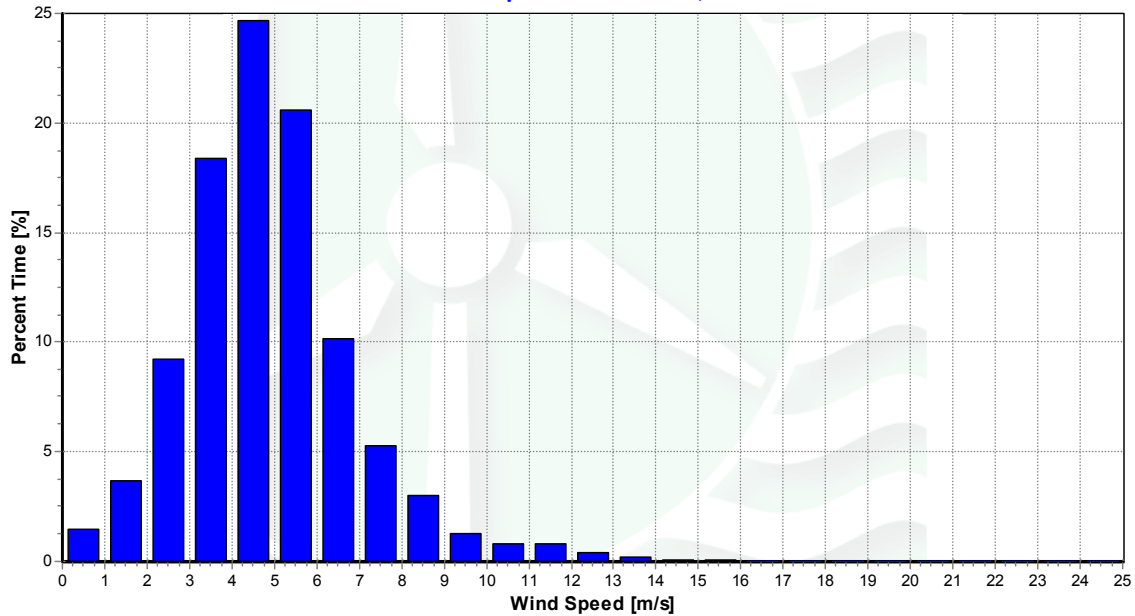


Figure 3 – Wind Speed Time Series, September 1, 2006 through November 30, 2006

Wind Speed Distributions

ORR Wind Speed Distribution, 49 m

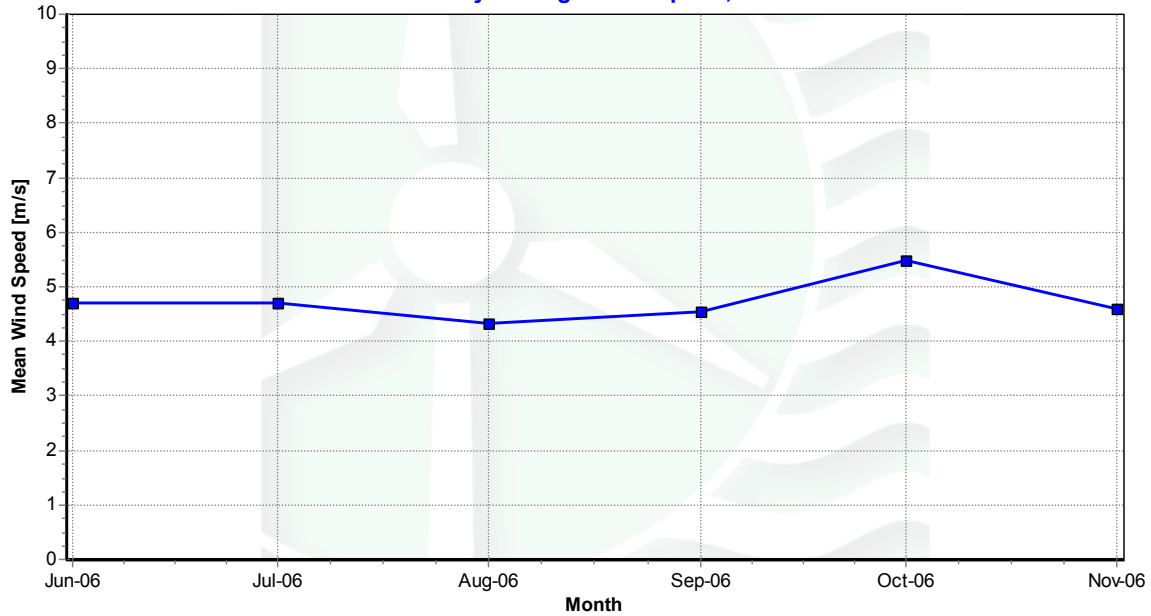


Plot by DQMS3 - dqms@dqms.com

Figure 4 – Wind Speed Distribution, September 1, 2006 through November 30, 2006

Monthly Average Wind Speeds

ORR Monthly Average Wind Speed, 49 m



Plot by DQMS3 - dqms@dqms.com

Figure 5 – Monthly Average Wind Speed, September 1, 2006 through November 30, 2006

Diurnal Average Wind Speeds

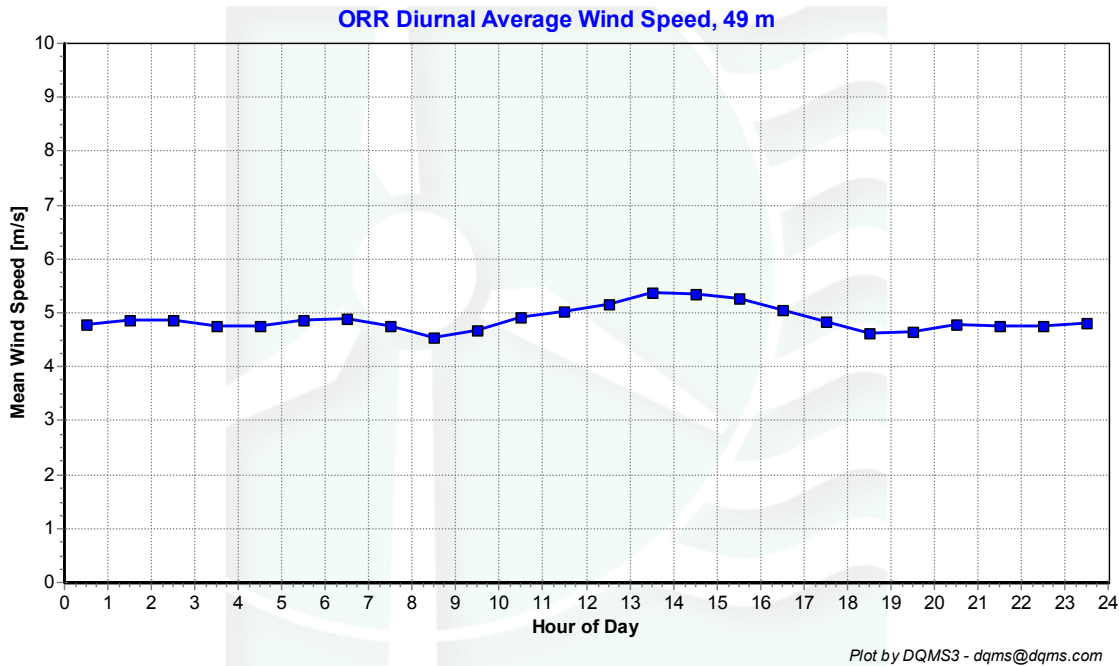


Figure 6 – Diurnal Average Wind Speed, September 1, 2006 through November 30, 2006

Turbulence Intensities

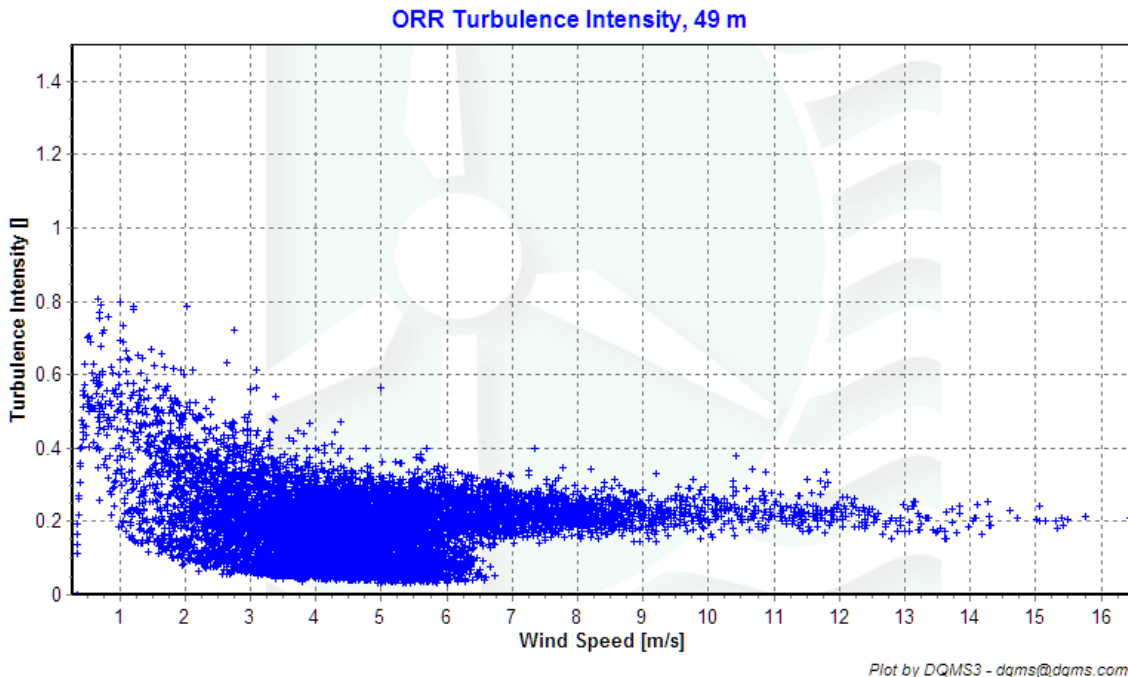
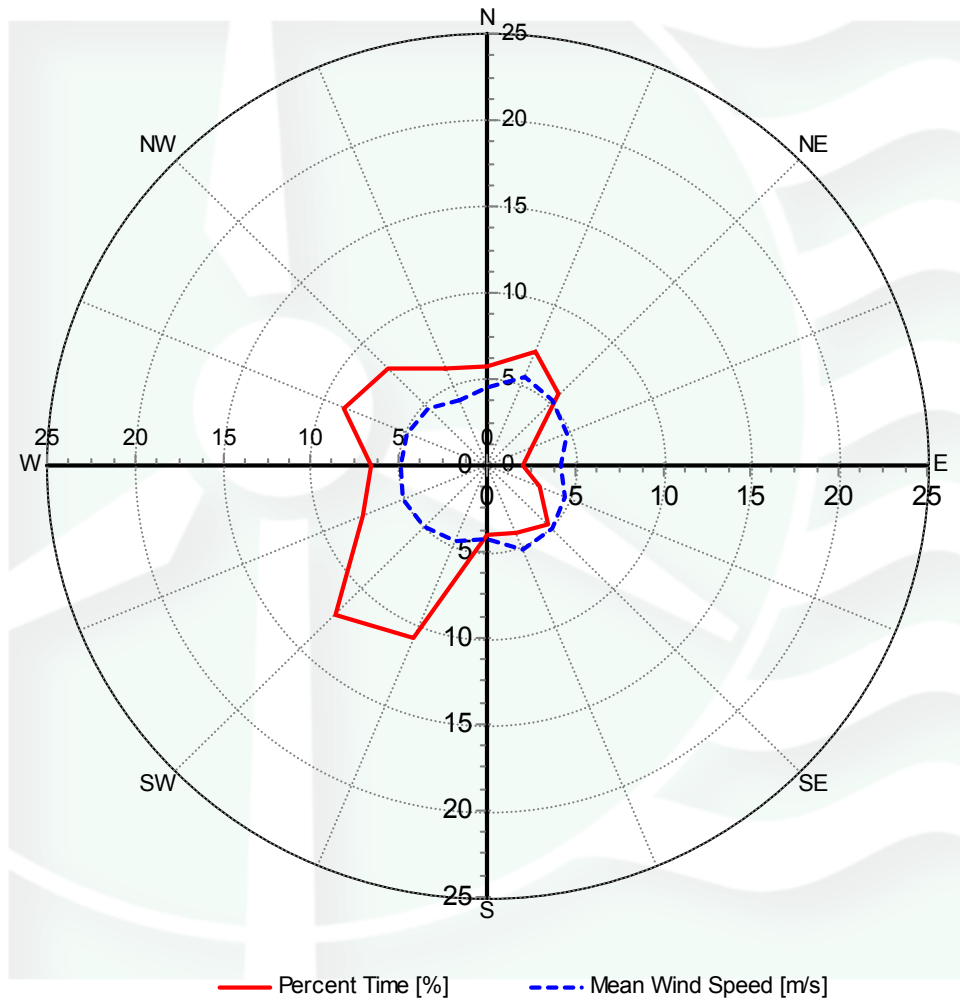


Figure 7 – Turbulence Intensity, September 1, 2006 through November 30, 2006

Wind Roses

ORR Wind Rose, 49 m



Plot by DQMS3 - dqms@dqms.com

Figure 8 – Wind Rose, September 1, 2006 through November 30, 2006

APPENDIX A - Sensor Performance Report

Test Definitions

Test Order	TestField1	TestField2	TestField3	CalcField1	CalcField2	CalcField3	TestType	Factor 1	Factor 2	Factor 3	Factor 4
1							TimeTest Insert	0	0	0	0
2	Etmp2aDEGC						MinMax	-30	60	0	0
3	Etmx2aDEGC						MinMax	-30	60	0	0
4	Etmn2aDEGC						MinMax	-30	60	0	0
5	EtmpSD2aDEGC						MinMax	-30	60	0	0
10	Anem50aMS						MinMax	0	90	0	0
11	Anem50bMS						MinMax	0	90	0	0
12	Anem38aMS						MinMax	0	90	0	0
13	Anem38bMS						MinMax	0	90	0	0
14	Anem20aMS						MinMax	0	90	0	0
20	AnemSD50aMS						MinMax	0	4	0	0
21	AnemSD50bMS						MinMax	0	4	0	0
22	AnemSD38aMS						MinMax	0	4	0	0
23	AnemSD38bMS						MinMax	0	4	0	0
24	AnemSD20aMS						MinMax	0	4	0	0
30	Vane50aDEG						MinMax	0	359.9	0	0
31	Vane38aDEG						MinMax	0	359.9	0	0
32	Vane20aDEG						MinMax	0	359.9	0	0
50	Turb50zNONE						MinMax	0	2	0	0
51	Turb38zNONE						MinMax	0	2	0	0
52	Turb20zNONE						MinMax	0	2	0	0
60	Wshr0zNONE						MinMax	-100	100	0	0
200	VaneSD50aDEG	Anem50yMS					MinMaxT	0	100	100	10
201	VaneSD38aDEG	Anem38yMS					MinMaxT	0	100	100	10
202	VaneSD20aDEG	Anem20aMS					MinMaxT	0	100	100	10
300	Anem50aMS	AnemSD50aMS	Vane50aDEG	VaneSD50aDEG	Etmp2aDEGC		Icing	0.5	1	2	10
301	Anem50bMS	AnemSD50bMS	Vane50aDEG	VaneSD50aDEG	Etmp2aDEGC		Icing	0.5	1	2	10
302	Anem38aMS	AnemSD38aMS	Vane38aDEG	VaneSD38aDEG	Etmp2aDEGC		Icing	0.5	1	2	10
303	Anem38bMS	AnemSD38bMS	Vane38aDEG	VaneSD38aDEG	Etmp2aDEGC		Icing	0.5	1	2	10
304	Anem20aMS	AnemSD20aMS	Vane20aDEG	VaneSD20aDEG	Etmp2aDEGC		Icing	0.5	1	2	10
400	Anem50aMS	Anem50bMS					CompareSensors	1	0.25	3	0
401	Anem38aMS	Anem38bMS					CompareSensors	1	0.25	3	0
500	Amax50aMS						MinMax	0	90	0	0
501	Amax50bMS						MinMax	0	90	0	0
502	Amax38aMS						MinMax	0	90	0	0
503	Amax38bMS						MinMax	0	90	0	0
504	Amax20aMS						MinMax	0	90	0	0
510	Amin50aMS						MinMax	0	90	0	0
511	Amin50bMS						MinMax	0	90	0	0

512	Amin38aMS					MinMax	0	90	0	0
513	Amin38bMS					MinMax	0	90	0	0
514	Amin20aMS					MinMax	0	90	0	0
520	Vmax50aDEG					MinMax	0	359.9	0	0
521	Vmax38aDEG					MinMax	0	359.9	0	0
522	Vmax20aDEG					MinMax	0	359.9	0	0
530	Vmin50aDEG					MinMax	0	359.9	0	0
531	Vmin38aDEG					MinMax	0	359.9	0	0
532	Vmin20aDEG					MinMax	0	359.9	0	0

Sensor Statistics

Sensors	Expected Data Points	Actual Data Points	% Data Recovered	Hours Out of Range	Hours of Icing	Hours of Fault	% Data Good
Anem50ams	13105	13027	99.405	0	23	14.333	97.696
AnemSD50ams	13105	13027	99.405	0	23	6.167	98.069
Anem50bms	13105	13027	99.405	0	23	0.5	98.329
AnemSD50bms	13105	13027	99.405	0	23	0.167	98.344
Anem50yMS	13105	13027	99.405	0	23	0	98.352
AnemSD50yMS	13105	13027	99.405	0	23	0	98.352
Anem38aMS	13105	13027	99.405	0	12.5	2.333	98.726
AnemSD38aMS	13105	13027	99.405	0	12.5	0.333	98.817
Anem38bMS	13105	13027	99.405	0	12.5	15.5	98.123
AnemSD38bMS	13105	13027	99.405	0	12.5	14.167	98.184
Anem38yMS	13105	13027	99.405	0	12.5	0	98.833
AnemSD38yMS	13105	13027	99.405	0	12.5	0	98.833
Anem20aMS	13105	13027	99.405	0	2.5	0	99.29
AnemSD20aMS	13105	13027	99.405	0	2.5	0	99.29
Vane50aDEG	13105	13027	99.405	0	23	0	98.352
VaneSD50aDEG	13105	13027	99.405	0.167	23	0	98.344
Vane38aDEG	13105	13027	99.405	0	12.5	0	98.833
VaneSD38aDEG	13105	13027	99.405	0.167	12.5	0	98.825
Vane20aDEG	13105	13027	99.405	0.5	2.5	0	99.267
VaneSD20aDEG	13105	13027	99.405	0.833	2.5	0	99.252
Etmp2aDEGC	13105	13027	99.405	0	0	0	99.405
EtmpSD2aDEGC	13105	13027	99.405	0	0	0	99.405
Total	288310	286594	99.405	1.667	294	53.5	98.678

APPENDIX B - Plot Data

Wind Speed Distribution Data

Bin Center Wind Speed [m/s]	Percent of Time [%]
0.5	1.47
1.5	3.65
2.5	9.2
3.5	18.4
4.5	24.66
5.5	20.56
6.5	10.13
7.5	5.26
8.5	3.04
9.5	1.28
10.5	0.78
11.5	0.78
12.5	0.38
13.5	0.23
14.5	0.09
15.5	0.08
16.5	0.01
17.5	0
18.5	0
19.5	0
20.5	0
21.5	0
22.5	0
23.5	0
24.5	0

Table 1 - Wind Speed Distribution

Monthly Average Wind Speed Data

Date	10 min Mean [m/s]
Junet-06	4.7
July-06	4.69
Aug-06	4.33
Sept-06	4.55
Oct-06	5.49
Nov-06	4.59

Table 2 - Wind Speed Averages, 49m

Diurnal Average Wind Speed Data

Hour of Day	Average Wind Speed [m/s]
0.5	4.78
1.5	4.87
2.5	4.87
3.5	4.77
4.5	4.76
5.5	4.88
6.5	4.9
7.5	4.75
8.5	4.56
9.5	4.68
10.5	4.92
11.5	5.02
12.5	5.16
13.5	5.37
14.5	5.36
15.5	5.26
16.5	5.06
17.5	4.84
18.5	4.63
19.5	4.64
20.5	4.79
21.5	4.77
22.5	4.77
23.5	4.81

Table 3 - Diurnal Average Wind Speeds

Wind Rose Data

Direction	Percent Time [%], 49 m	Mean Wind Speed [m/s], 49 m
N	5.79	4.52
NNE	7.12	5.52
NE	5.83	5.28
ENE	2.68	4.9
E	2.08	4.22
ESE	3.24	4.85
SE	4.84	5.25
SSE	4.24	5.27
S	4	4.22
SSW	10.85	4.74
SW	12.22	4.99
WSW	7.62	5.15
W	6.63	4.9
WNW	8.76	4.9
NW	7.95	4.73
NNW	6.14	4.09

Table 4 - Wind Rose, Time Percentage and Mean Wind Speed by Direction