

WIND DATA REPORT

Old Rochester Regional High School Mattapoisett, Massachusetts

December 1st, 2007 – February 29th, 2008

Prepared for

Massachusetts Technology Collaborative
75 North Drive
Westborough, MA 01581

by

William L. W. Henson
James F. Manwell
Utama Abdulwahid
Anthony F. Ellis

May 22, 2008

Report template version 3.1

Renewable Energy Research Laboratory
University of Massachusetts, Amherst
160 Governors Drive, Amherst, MA 01003
www.ceere.org/rerl • (413) 545-4359 • rerl@ecs.umass.edu



NOTICE AND ACKNOWLEDGEMENTS

This report was prepared by the Renewable Energy Research Laboratory (RERL) at the University of Massachusetts, Amherst in the course of performing work sponsored by the Renewable Energy Trust (RET), as administered by the Massachusetts Technology Collaborative (MTC). The opinions expressed in this report do not necessarily reflect those of MTC or the Commonwealth of Massachusetts, and reference to any specific product, service, process, or method does not constitute an implied or expressed recommendation or endorsement of it.

Further, MTC, the Commonwealth of Massachusetts, and RERL make no warranties or representations, expressed or implied, as to the fitness for particular purpose or merchantability of any product, apparatus, or service, or the usefulness, completeness, or accuracy of any processes, methods or other information contained, described, disclosed, or referred to in this report. MTC, the Commonwealth of Massachusetts, and the contractor make no representation that the use of any product, apparatus, process, method, or other information will not infringe privately owned rights and will assume no liability for any loss, injury, or damage directly or indirectly resulting from, or occurring in connection with, the use of information contained, described, disclosed, or referred to in this report.

TABLE OF CONTENTS

Notice and Acknowledgements	1
Table of Contents	2
Table of Figures	3
Executive Summary	4
SECTION 1 - Station Location	5
SECTION 2 - Instrumentation and Equipment	5
SECTION 3 - Data Summary	7
SECTION 4 - Graphs	9
Wind Speed Time Series	10
Wind Speed Distributions	10
Monthly Average Wind Speeds	11
Diurnal Average Wind Speeds	11
Turbulence Intensities	12
Wind Roses	13
SECTION 5 - Significant Meteorological Events	14
SECTION 6 - Data Collection and Maintenance	14
SECTION 7 - Data Recovery and Validation	14
Test Definitions	15
Sensor Statistics	16
APPENDIX A - Sensor Performance Report	17
Test Definitions	17
Sensor Statistics	18
APPENDIX B - Plot Data	19
Wind Speed Distribution Data	19
Monthly Average Wind Speed Data	20
Diurnal Average Wind Speed Data	21
Wind Rose Data	20

TABLE OF FIGURES

Figure 1 – Topographic Map Showing ORR Site Location--Source Topozone.com.....	5
Figure 2 – Raising the Met-tower at ORR Site.....	6
Figure 3 - Wind Speed Time Series, December 1 st 2007—February 29 th 2008	10
Figure 4 - Wind Speed Distribution, December 1 st 2007— February 29 th 2008	10
Figure 5 - Monthly Average Wind Speed.....	11
Figure 6 - Diurnal Average Wind Speed, December 1 st 2007— February 29 th 2008.....	11
Figure 7 - Turbulence Intensity, December 1 st 2007— February 29 th 2008.....	12
Figure 8 - Wind Rose, December 1 st 2007— February 29 th 2008	13

EXECUTIVE SUMMARY

All the work presented in this Wind Data Report including installation and decommissioning of the meteorological tower and instrumentation, and the data analysis and reporting was performed by the Renewable Energy Research Laboratory (RERL) at the University of Massachusetts, Amherst.

This report covers wind data measured at a meteorological tower installed at Old Rochester Regional High School in the town of Mattapoisett, MA. Installed on May 31st, 2006, the wind monitoring station has been in continuous operation to this day. Two sets of two anemometers and one wind vane are mounted at 49 m (160.7 ft) and 38 m (124.6 ft), and an additional anemometer and vane are mounted at 20 m (65.6 ft). Reports are made on a quarterly basis; and this report is the seventh report for ORR.

The season covered by this quarterly report is December 1st 2007 – February 29th 2008 (winter quarter). The mean recorded wind speed for this quarter was 5.04 m/s (11.3 mph)¹ and the prevailing wind direction was from the southwest. The gross data recovery percentage (the actual percentage of expected data received) was 100% and the net data recovery percentage (the percentage of expected data which passed all of the quality assurance tests) was 94.35%.

Additional information about interpreting the data presented in this report can be found in the Fact Sheet, “Interpreting Your Wind Resource Data,” produced by RERL and the Massachusetts Technology Collaborative (MTC). This document is found through the RERL website:

http://www.ceere.org/rerl/about_wind/RERL_Fact_Sheet_6_Wind_resource_interpretation.pdf

* 1 m/s = 2.237 mph.

¹ 1m/s=2.237 mph

SECTION 1 - Station Location

The ORR site is located near the Old Rochester Regional High School in Mattapoisett, MA. Latitude and Longitude are $41^{\circ} 40' 35.74''$ N and $70^{\circ} 46' 57.71''$ W, respectively, using the NAD 83 datum. Figure 1 marks the site on a topographic map.

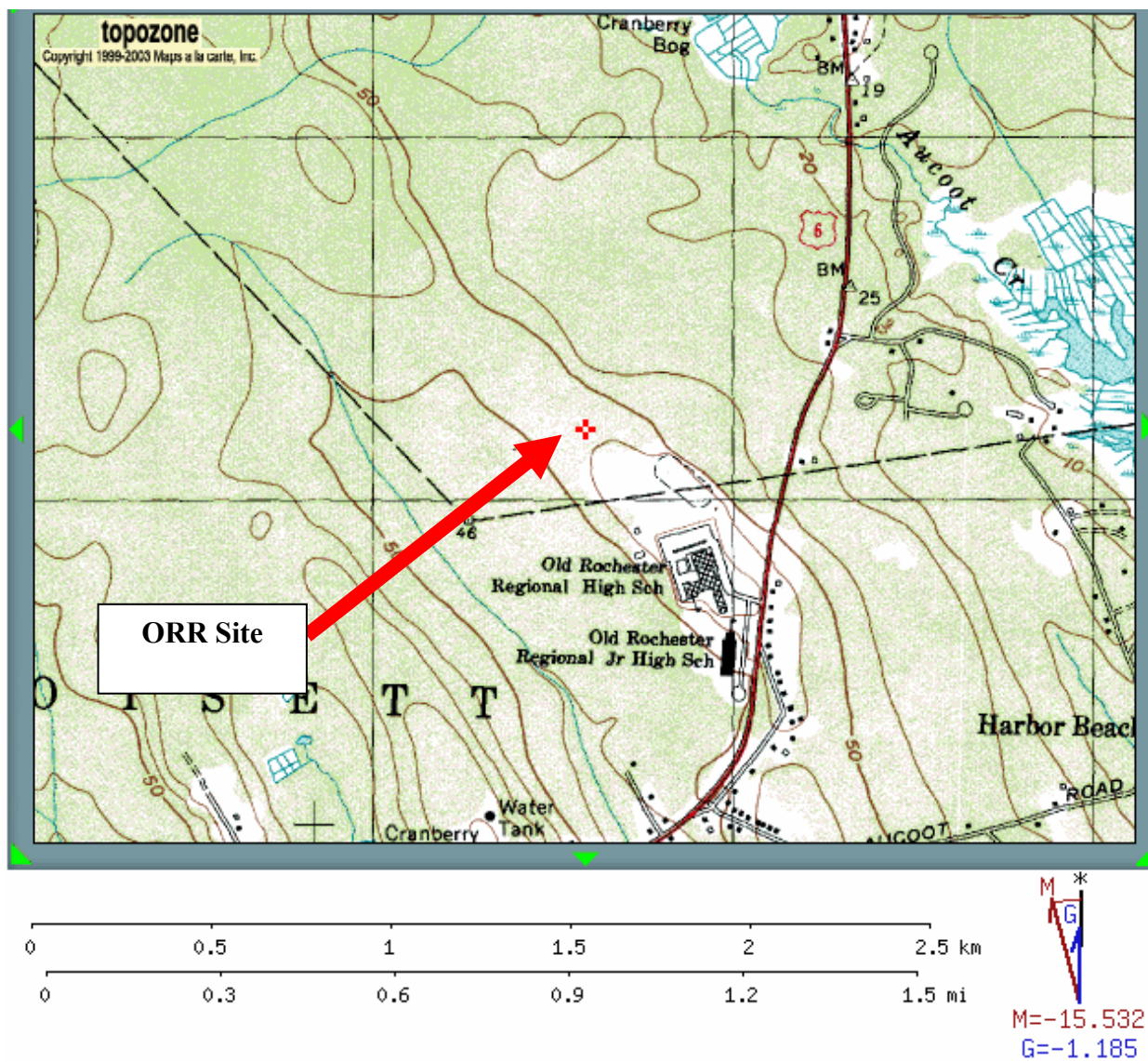


Figure 1 – Topographic Map Showing ORR Site Location--Source Topozone.com

SECTION 2 - Instrumentation and Equipment

The wind monitoring equipment is mounted on a 50 m (164.0 ft) NRG tower. All other monitoring equipment comes from NRG Systems, and consists of the following items:

- Symphonie Data Logger
- Electrical enclosure box
- 5 – #40 Anemometers, standard calibration (Slope - 0.765 m/s, Offset – 0.350 m/s). Two anemometers are located at 49 m (160.7 ft), two at 38 m (124.6 ft) and one at 20 m (65.6 ft).
- 3 - #200P Wind direction vanes. They are located at heights of 49 m (160.7 ft), 38 m (124.6 ft) and 20 m (65.6 ft) each.
- 5 – Sensor booms, 54” length
- Lightning rod and grounding cable
- 1 - #110S Temperature Sensor mounted at approximately 3 m (9.8 ft)
- Shielded sensor wire



Figure 2 – Raising the Met-tower at ORR Site

The data from the Symphonie logger is mailed to the Renewable Energy Research Laboratory at the University of Massachusetts, Amherst on a regular basis. The logger samples wind speed and direction once every two seconds. These data are then combined into 10-minute averages and, along with the standard deviation for those 10-minute periods, are put into a binary file. These binary files are converted to ASCII text files using the NRG software BaseStation®. These text files are then imported into a database

software program where they are subjected to quality assurance (QA) tests prior to using the data.

SECTION 3- Data Summary

A summary of the wind speeds and wind directions measured during the reporting period is included in Table 1. Table 1 includes the mean wind speeds measured at each measurement height, the maximum instantaneous wind speed measured at each measurement height and the prevailing wind direction measured at each measurement height. These values are provided for each month of the reporting period and for the whole reporting period.

Table 1. Wind Speed and Direction Data Summary

Date	Mean Wind Speed	Max Wind Speed	Prevailing Wind Direction	Mean Wind Speed	Max Wind Speed	Prevailing Wind Direction	Mean Wind Speed	Max Wind Speed	Prevailing Wind Direction
Height Units	49 m [m/s]	49 m [m/s]	49 m [m/s]	38 m [m/s]	38 m [m/s]	38 m [m/s]	20 m [m/s]	20 m [m/s]	20 m [m/s]
Dec	4.86	14.2	WNW	4.2	12.62	WNW	2.61	9.46	WNW
Jan	5.15	13.96	SW	4.53	12.89	SW	2.8	8.49	SW
Feb	--	15.89	WNW	4.57	13.96	WNW	2.96	10.93	WNW
Dec 07 – Feb 08	5.04	15.89	WNW	4.43	13.96	WNW	2.79	10.93	WNW

Wind data statistics in the table are reported when more than 90% of the data during the reporting period are valid. In cases when a larger amount of data are missing, the percent of the available data that are used to determine the data statistics is noted.

No measurement of wind speed or direction can be perfectly accurate. Wind speed measurement errors occur due to anemometer manufacturing variability, anemometer calibration errors, the response of anemometers to turbulence and vertical air flow and due to air flows caused by the anemometer mounting system. Every effort is made to reduce the sources of these errors. Nevertheless, the values reported in this report have an expected uncertainty of about $\pm 2\%$ or ± 0.2 m/s, whichever is greater. Wind direction measurement errors occur due to sensor measurement uncertainty, tower effects, boom alignment measurement errors and twisting of pipe sections during the raising of a pipe tower. Efforts are also made to reduce these errors, but the reported wind directions are estimated to have an uncertainty of ± 5 degrees.

A summary of the turbulence intensity and mean wind shear measured at each measurement height during the reporting period is included in Table 2. These values are

provided for each month of the reporting period and for the whole reporting period. Turbulence intensity is calculated by dividing the standard deviation of the wind speed by the mean wind speed and is a measure of the gustiness of a wind resource. Lower turbulence results in lower mechanical loads on a wind turbine. Turbulence intensity varies with wind speed. The average turbulence intensity presented in Table 2 is the mean turbulence intensity when the wind speed at each measurement height is between 10 and 11 m/s.

Shear coefficients provide a measure of the change in wind speed with height. When data at multiple heights are available, shear coefficients, α , have been determined. They can be used in the following formula to estimate the average wind speed, $U(z)$, at height z , when the average wind speed, $U(z_r)$, at height z_r is known:

$$U(z) = U(z_r) \left(\frac{z}{z_r} \right)^\alpha$$

The change in wind speed with height is a very complicated relationship related to atmospheric conditions, wind speed, wind direction, time of day and time of year. This formula will not always provide the correct answer at any given site. Nevertheless the calculated shear coefficient, based on measurements at two heights, can be used to characterize the degree of increase in wind speed with height at a site.

The mean wind shear coefficient that is provided here is calculated based on the mean wind speeds in Table 1, where z_{high} and z_{low} are the heights of the higher and lower mean wind speeds used in the calculation and $U(z_{low})$ and $U(z_{high})$ are the mean wind speeds at the two heights.

$$\alpha = \log \left(\frac{U(z_{high})}{U(z_{low})} \right) / \log \left(\frac{z_{high}}{z_{low}} \right)$$

Table 2. Shear and Turbulence Intensity Data Summary

Date	Turbulence Intensity at 10 m/s	Turbulence Intensity at 10 m/s	Turbulence Intensity at 10 m/s	Mean Wind Shear Coefficient, α
Height Units	49 m [-]	38 m [-]	20 m [-]	Between 49 m and 38 m [-]
Dec	0.231	0.255	--	0.578
Jan	0.224	0.25	--	0.502
Feb	0.239	0.25	0.259	--
Dec 07 –Feb 08	0.232	0.251	0.259	0.507

SECTION 4- Graphs

This report contains several types of wind data graphs. Unless otherwise noted, each graph represents data from 1 quarter (3 months). The following graphs are included:

- Time Series – 10-minute average wind speeds are plotted against time.
- Wind Speed Distribution – A histogram plot giving the percentage of time that the wind is at a given wind speed.
- Monthly Average – A plot of the monthly average wind speed over a 12-month period. This graph shows the trends in the wind speed over the year.
- Diurnal – A plot of the average wind speed for each hour of the day.
- Turbulence Intensity – A plot of turbulence intensity as a function of wind speed. Turbulence Intensity is calculated as the standard deviation of the wind speed divided by the wind speed and is a measure of the gustiness of a wind resource. Lower turbulence results in lower mechanical loads on a wind turbine.
- Wind Rose – A plot, by compass direction showing the percentage of time that the wind comes from a given direction and the average wind speed in that direction.

Figure 3 shows that the windspeeds at 49 m rarely exceeded 8 m/s (17.9 mph). Figure 4 Shows that windspeeds at 49 m were in the 4 m/s to 5 m/s (8.9 mph and 11.2 mph) range approximately 23% of the time. Figure 5 shows that the monthly average windspeed at 49 m is very near 5 m/s (11.2 mph); visible in the figure is that the lack of valid data for February (due mainly to icing events) has prevented a monthly average from being drawn. Figure 6 shows that the windspeed at 49 m over the course of a day also was very near 5 m/s (11.2 mph), though on average the wind speed peaks in the mid-afternoon. Figure 7 shows that the turbulence intensity for higher windspeeds is generally slightly above 0.2. Figure 8 shows that the wind blew primarily from the WNW and that average wind speed was highest, 6.8 m/s (15.2 mph), when blowing from the S.

Data for the wind speed histograms, monthly and diurnal average plots, and wind roses are included in APPENDIX B.

Wind Speed Time Series

ORR Wind Speed Time Series, 49 m

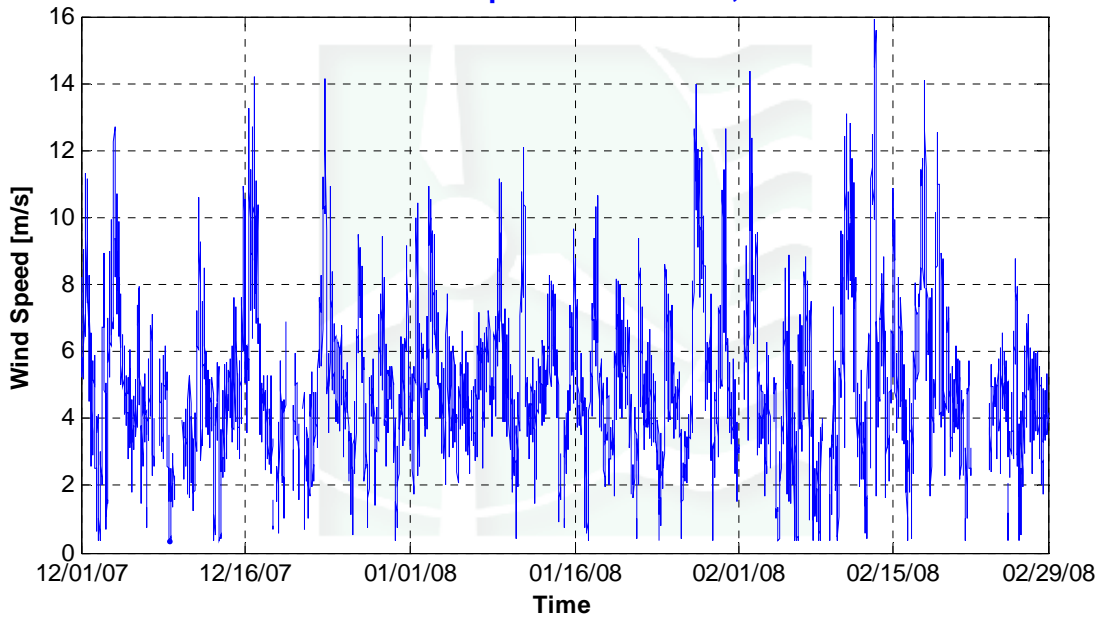


Figure 3 - Wind Speed Time Series, December 1st 2007—February 29th 2008

Wind Speed Distributions

ORR Wind Speed Distribution, 49 m

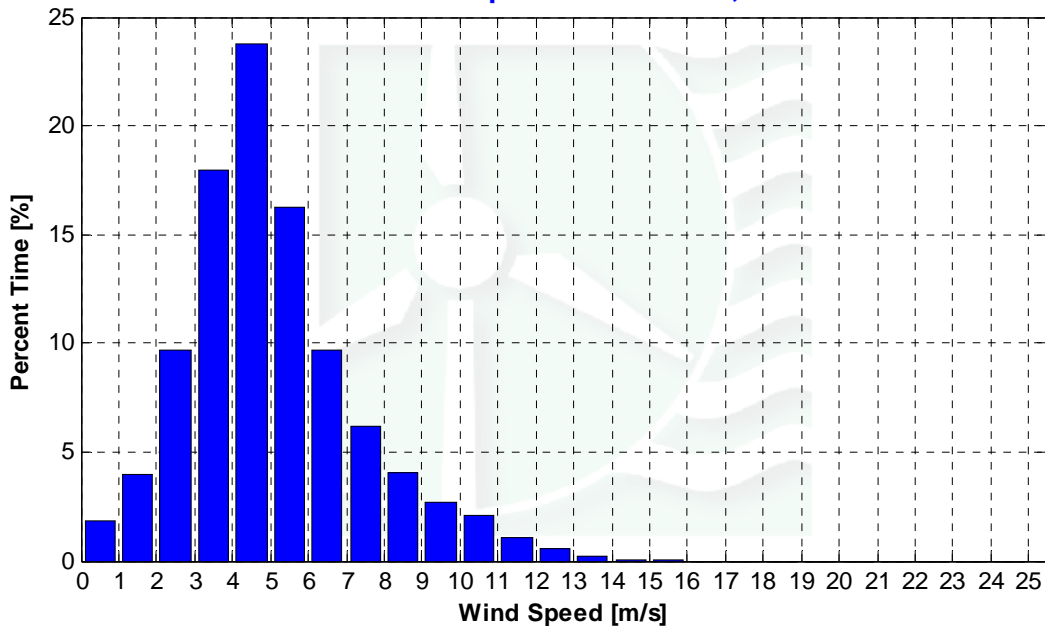


Figure 4 - Wind Speed Distribution, December 1st 2007— February 29th 2008

Monthly Average Wind Speeds

ORR Monthly Average Wind Speed, 49 m

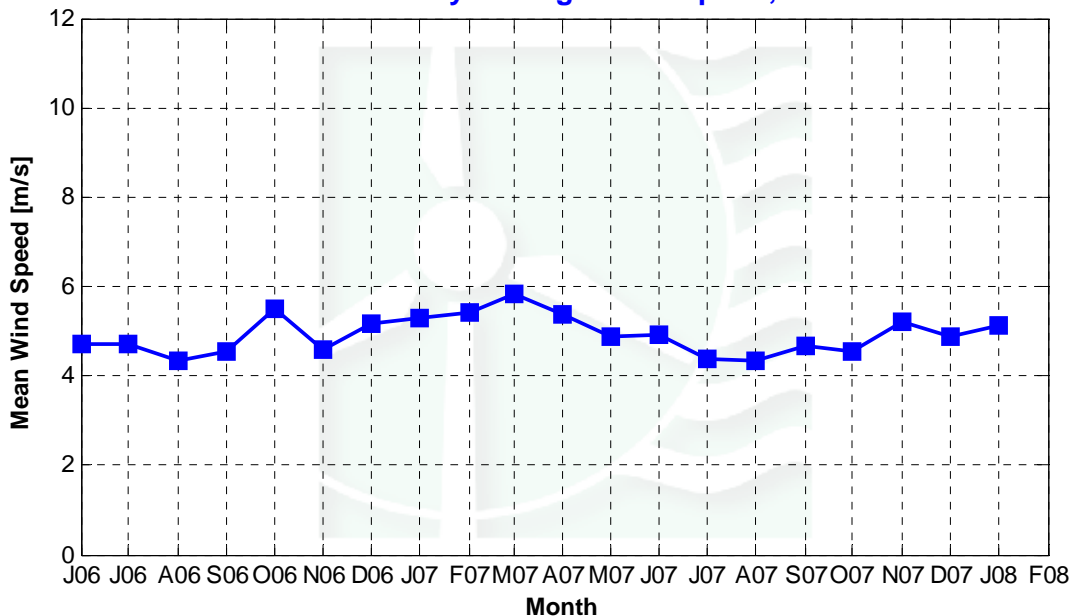


Figure 5 - Monthly Average Wind Speed

Diurnal Average Wind Speeds

ORR Diurnal Average Wind Speed, 49 m

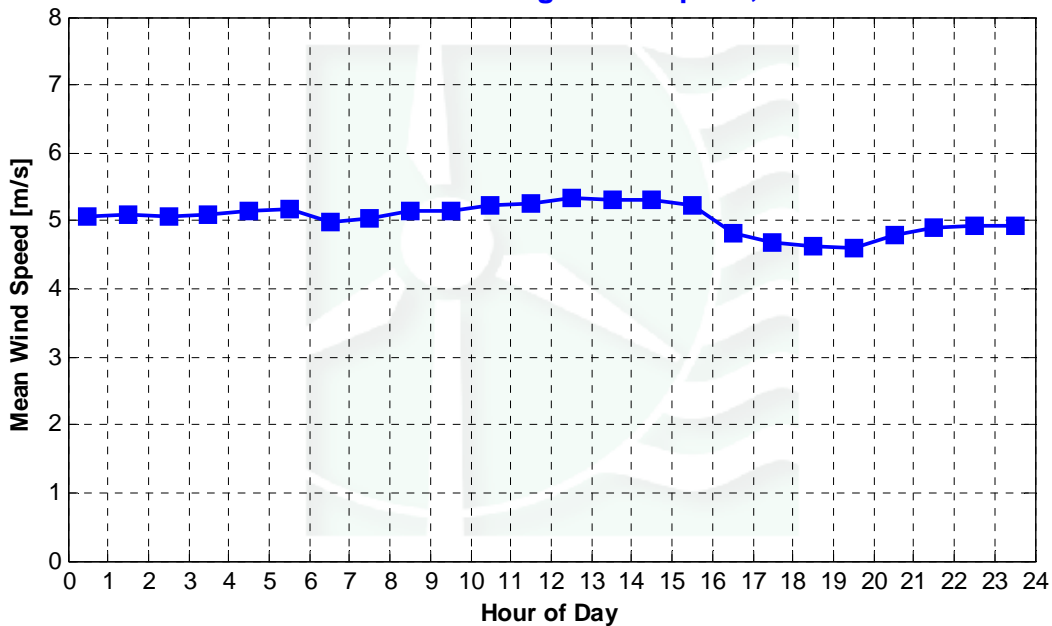


Figure 6 - Diurnal Average Wind Speed, December 1st 2007— February 29th 2008

Turbulence Intensities

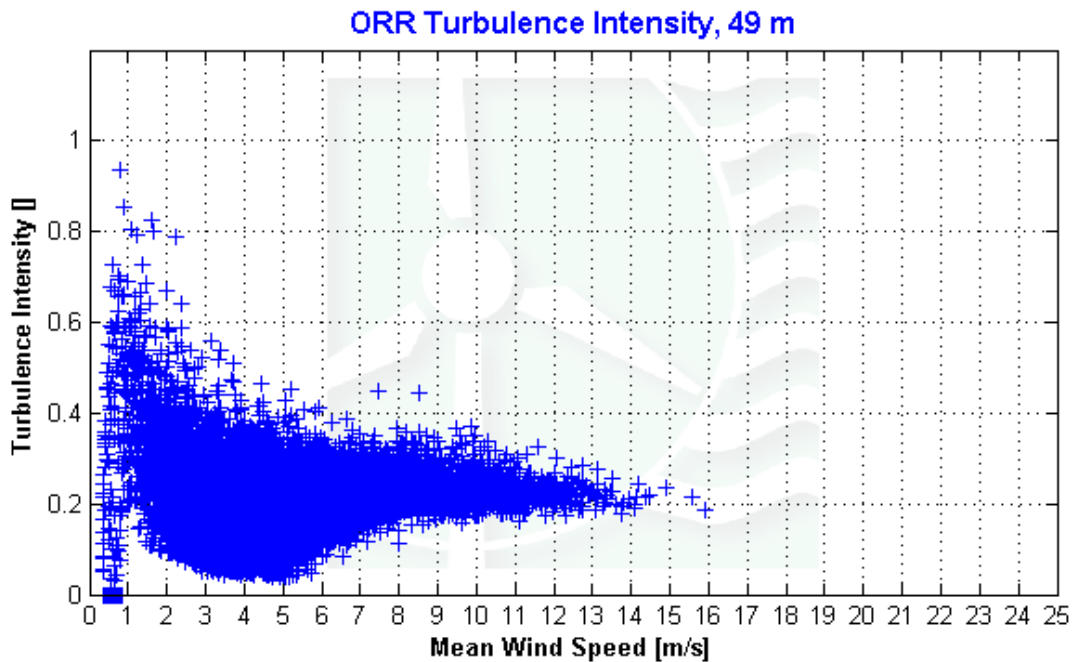


Figure 7 - Turbulence Intensity, December 1st 2007— February 29th 2008

Wind Roses

ORR Wind Rose, 49 m

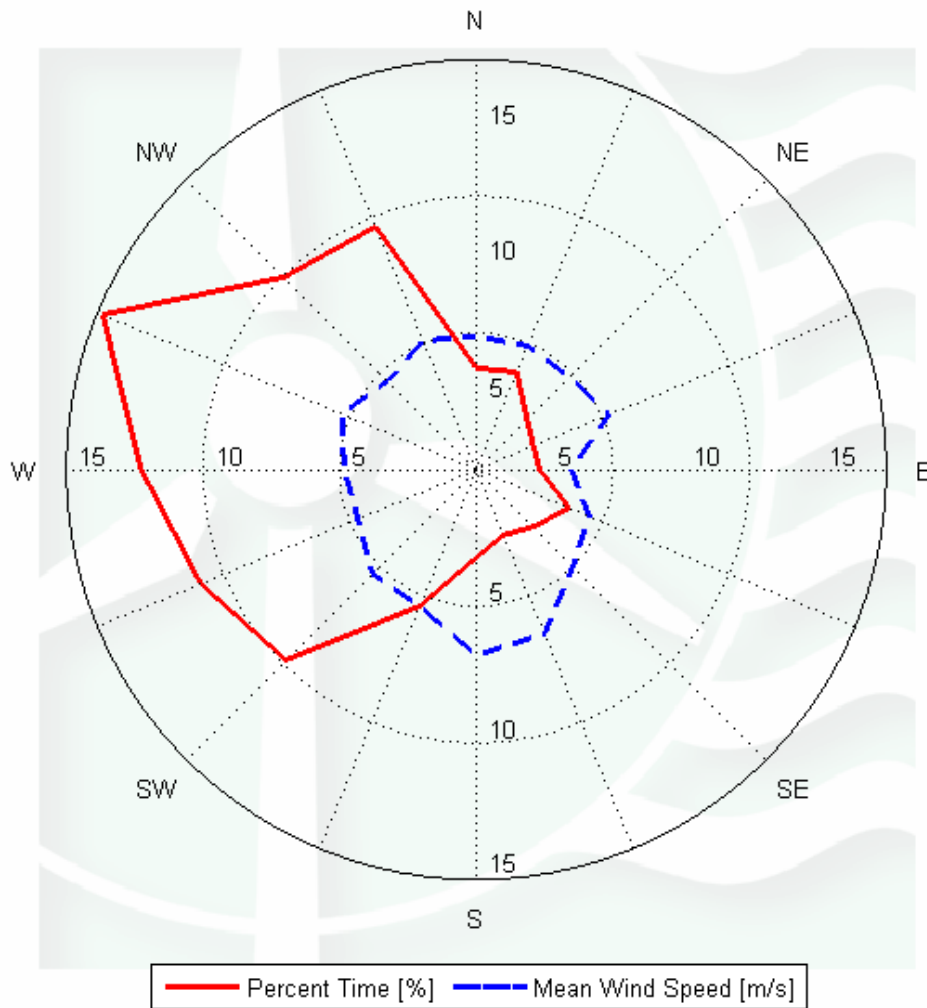


Figure 8 - Wind Rose, December 1st 2007— February 29th 2008

SECTION 5 - Significant Meteorological Events

Other than several short-term sensor icing events (the longest of which are listed below), there were no weather conditions that would have significantly affected wind speed or wind direction data.

- 12/07/07 22:40 for approximately 12 hours
- 12/09/07 19:50 for approximately 20 hours
- 12/20/07 09:20 for approximately 11 hours
- 02/01/08 00:00 for approximately 8 hours
- 02/03/08 21:00 for approximately 7 hours
- 02/08/08 18:00 for approximately 15 hours
- 02/22/08 17:00 for approximately 43 hours

Sources: <http://www.weather.gov/climate/index.php?wfo=box>,
<http://www.wunderground.com/history/airport/KEWB>

SECTION 6 - Data Collection and Maintenance

The percentage of valid data collected at the 49 m height during February was 88.3%. Therefore there is too little data for February to calculate monthly statistics for this month. The low amount of valid data is primarily due several short-term icing events during the month.

SECTION 7 - Data Recovery and Validation

All raw wind data are subjected to a series of tests and filters to weed out data that are faulty or corrupted. Definitions of these quality assurance (QA) controls are given below under Test Definitions and Sensor Statistics. These control filters were designed to automate the quality control process and used many of the previous hand-worked data sets made at UMass to affect a suitable emulation. The gross percentage of data recovered (ratio of the number of raw data points received to data points expected) and net percentage (ratio of raw data points which passed all QA control tests to data points expected) are shown below.

Gross Data Recovered [%]	100
Net Data Recovered [%]	94.346

Test Definitions

All raw data were subjected to a series of validation tests, as described below. The sensors tested and the parameters specific to each sensor are given in the Sensor Performance Report which is included in APPENDIX A. Data which were flagged as invalid were not included in the statistics presented in this report.

MinMax Test: All sensors are expected to report data values within a range specified by the sensor and logger manufacturers. If a value falls outside this range, it is flagged as invalid. A data value from the sensor listed in Test Field 1 (TF1) is flagged if it is less than Factor 1 (F1) or greater than Factor 2. This test has been applied to the following sensors (as applicable): wind speed, wind speed standard deviation, wind direction, temperature, and solar insolation.

$$F1 > TF1 > F2$$

MinMaxT Test: This is a MinMax test for wind direction standard deviation with different ranges applied for high and low wind speeds. A wind direction standard deviation data value (TF1) is flagged either if it is less than Factor 1, if the wind speed (TF2) is less than Factor 4 and the wind direction standard deviation is greater than Factor 2, or if the wind speed is greater than or equal to Factor 4 and the wind direction standard deviation is greater than Factor 3.

$$\begin{aligned} & (TF1 < F1) \\ & \text{or } (TF2 < F4 \text{ and } TF1 > F2) \\ & \text{or } (TF2 \geq F4 \text{ and } TF1 > F3) \end{aligned}$$

Icing Test: An icing event occurs when ice collects on a sensor and degrades its performance. Icing events are characterized by the simultaneous measurements of near-zero standard deviation of wind direction, non-zero wind speed, and near- or below-freezing temperatures. Wind speed, wind speed standard deviation, wind direction, and wind direction standard deviation data values are flagged if the wind direction standard deviation (CF1) is less than or equal to Factor 1 (F1), the wind speed (TF1) is greater than Factor 2 (F2), and the temperature (CF2) is less than Factor 3 (F3). To exit an icing event, the wind direction standard deviation must be greater than Factor 4.

$$CF1 \leq F1 \text{ and } TF1 > F2 \text{ and } CF2 < F3$$

CompareSensors Test: Where primary and redundant sensors are used, it is possible to determine when one of the sensors is not performing properly. For anemometers, poor performance is characterized by low data values. Therefore, if one sensor of the pair reports values significantly below the other, the low values are flagged. At low wind speeds (Test Fields 1 and 2 less than or equal to Factor 3) wind speed data are flagged if the absolute difference between the two wind speeds is greater than Factor 1. At high

wind speeds (Test Fields 1 or 2 greater than Factor 3) wind speed data are flagged if the absolute value of the ratio of the two wind speeds is greater is greater than Factor 2.

$$\begin{aligned} & [TF1 \leq F3 \text{ and } TF2 \leq F3 \text{ and } \text{abs}(TF1 - TF2) > F1] \\ \text{or } & [(TF1 > F3 \text{ or } TF2 > F3) \text{ and } (\text{abs}(1 - TF1 / TF2) > F2 \text{ or } \text{abs}(1 - TF2 / TF1) > F2)] \end{aligned}$$

Sensor Statistics

A summary of the results of the data collection and filtering are given in the Sensor Performance Report which is included in APPENDIX A. The following categories of information, tabulated for each sensor, are included in that report.

Expected Data Points: the total number of sample intervals between the start and end dates (inclusive).

Actual Data Points: the total number of data points recorded between the start and end dates.

% Data Recovered: the ratio of actual and expected data points (this is the *gross data recovered percentage*).

Hours Out of Range: total number of hours for which data were flagged according to MinMax and MinMaxT tests. These tests flag data which fall outside of an expected range.

Hours of Icing: total number of hours for which data were flagged according to Icing tests. This test uses the standard deviation of wind direction, air temperature, and wind speed to determine when sensor icing has occurred.

Hours of Fault: total number of hours for which data were flagged according to CompareSensors tests. These tests compare two sensors (e.g. primary and redundant anemometers installed at the same height) and flag data points where one sensor differs significantly from the other.

% Data Good: the filter results are subtracted from the gross data recovery percentage to yield the *net data recovered percentage*.

APPENDIX A - Sensor Performance Report

Test Definitions

Test Order	TestField1	TestField2	TestField3	CalcField1	Calc Field2	Calc Field3	TestType	Factor1	Factor2	Factor3	Factor4
1							TimeTest Insert	0	0	0	0
2	Etmp2aDEGC						MinMax	-30	60	0	0
3	Etmp2aDEGC						MinMax	-30	60	0	0
4	Etmp2aDEGC						MinMax	-30	60	0	0
5	EtmpSD2aDEGC						MinMax	-30	60	0	0
10	Anem49aMS						MinMax	0	90	0	0
11	Anem49bMS						MinMax	0	90	0	0
12	Anem38aMS						MinMax	0	90	0	0
13	Anem38bMS						MinMax	0	90	0	0
14	Anem20aMS						MinMax	0	90	0	0
20	AnemSD49aMS						MinMax	0	4	0	0
21	AnemSD49bMS						MinMax	0	4	0	0
22	AnemSD38aMS						MinMax	0	4	0	0
23	AnemSD38bMS						MinMax	0	4	0	0
24	AnemSD20aMS						MinMax	0	4	0	0
30	Vane49aDEG						MinMax	0	359.9	0	0
31	Vane38aDEG						MinMax	0	359.9	0	0
32	Vane20aDEG						MinMax	0	359.9	0	0
50	Turb49zNONE						MinMax	0	2	0	0
51	Turb38zNONE						MinMax	0	2	0	0
52	Turb20zNONE						MinMax	0	2	0	0
60	Wshr0zNONE						MinMax	-100	100	0	0
200	VaneSD49aDEG	Anem49yMS					MinMaxT	0	100	100	10
201	VaneSD38aDEG	Anem38yMS					MinMaxT	0	100	100	10
202	VaneSD20aDEG	Anem20aMS					MinMaxT	0	100	100	10
300	Anem49aMS	AnemSD49aMS	Vane49aDEG	VaneSD49aDEG	Etmp2aDEGC		Icing	0.5	1	2	10
301	Anem49bMS	AnemSD49bMS	Vane49aDEG	VaneSD49aDEG	Etmp2aDEGC		Icing	0.5	1	2	10
302	Anem38aMS	AnemSD38aMS	Vane38aDEG	VaneSD38aDEG	Etmp2aDEGC		Icing	0.5	1	2	10
303	Anem38bMS	AnemSD38bMS	Vane38aDEG	VaneSD38aDEG	Etmp2aDEGC		Icing	0.5	1	2	10
304	Anem20aMS	AnemSD20aMS	Vane20aDEG	VaneSD20aDEG	Etmp2aDEGC		Icing	0.5	1	2	10
400	Anem49aMS	Anem49bMS					CompareSensors	1	0.25	3	0
401	Anem38aMS	Anem38bMS					CompareSensors	1	0.25	3	0
500	Amax49aMS						MinMax	0	90	0	0
501	Amax49bMS						MinMax	0	90	0	0
502	Amax38aMS						MinMax	0	90	0	0
503	Amax38bMS						MinMax	0	90	0	0

Test Definitions, cont.

504	Amax20aMS						MinMax	0	90	0	0
510	Amin49aMS						MinMax	0	90	0	0
511	Amin49bMS						MinMax	0	90	0	0
512	Amin38aMS						MinMax	0	90	0	0
513	Amin38bMS						MinMax	0	90	0	0
514	Amin20aMS						MinMax	0	90	0	0
520	Vmax49aDEG						MinMax	0	359.9	0	0
521	Vmax38aDEG						MinMax	0	359.9	0	0
522	Vmax20aDEG						MinMax	0	359.9	0	0
530	Vmin49aDEG						MinMax	0	359.9	0	0
531	Vmin38aDEG						MinMax	0	359.9	0	0
532	Vmin20aDEG						MinMax	0	359.9	0	0

Sensor Statistics

Sensor	Expected Data Points	Actual Data Points	% Data Recovered	Hours Out of Range	Hours of Icing	Hours of Fault	% Data Good
Anem49ams	13104	13104	100	0	160	12.83	92.09
AnemSD49ams	13104	13104	100	0	160	12.83	92.09
Anem49bms	13104	13104	100	0	171.5	1.33	92.09
AnemSD49bms	13104	13104	100	0	171.5	1.33	92.09
Anem38aMS	13104	13104	100	0	134.83	11.83	93.28
AnemSD38aMS	13104	13104	100	0	134.83	11.83	93.28
Anem38bMS	13104	13104	100	0	133	4.5	93.7
AnemSD38bMS	13104	13104	100	0	133	4.5	93.7
Anem20aMS	13104	13104	100	0	84.17	0	96.15
AnemSD20aMS	13104	13104	100	0	84.17	0	96.15
Vane49aDEG	13104	13104	100	0.17	172.83	0	92.08
VaneSD49aDEG	13104	13104	100	0.17	172.83	0	92.08
Vane38aDEG	13104	13104	100	0.5	137.5	0	93.68
VaneSD38aDEG	13104	13104	100	0.5	137.5	0	93.68
Vane20aDEG	13104	13104	100	2.17	84.17	0	96.05
VaneSD20aDEG	13104	13104	100	2.17	84.17	0	96.05
Etmp2aDEGC	13104	13104	100	0	0	0	100
EtmpSD2aDEGC	13104	13104	100	0	0	0	100
Total	235872	235872	100	5.67	2156	61	94.35

APPENDIX B - Plot Data

Wind Speed Distribution Data

Bin Center Wind Speed [m/s]	Percent of Time [%]
0.5	1.86
1.5	3.96
2.5	9.68
3.5	17.99
4.5	23.8
5.5	16.25
6.5	9.66
7.5	6.23
8.5	4.02
9.5	2.66
10.5	2.05
11.5	1.08
12.5	0.52
13.5	0.17
14.5	0.06
15.5	0.02
16.5	0
17.5	0
18.5	0
19.5	0
20.5	0
21.5	0
22.5	0
23.5	0
24.5	0

Wind Rose Data

Direction	Percent Time [%], 49 m	Mean Wind Speed [m/s], 49 m
N	3.7	4.88
NNE	3.85	4.89
NE	2.62	4.8
ENE	2.25	5.25
E	2.31	3.47
ESE	3.69	4.47
SE	2.96	5
SSE	2.59	6.51
S	3.22	6.79
SSW	5.41	5.42
SW	9.85	5.39
WSW	10.91	4.69
W	12.26	4.83
WNW	14.79	5.33
NW	9.95	4.58
NNW	9.61	5.1

Monthly Average Wind Speed Data

Date	10 min Mean [m/s]
Jun-06	4.7
Jul-06	4.69
Aug-06	4.33
Sept-06	4.55
Oct-06	5.49
Nov-06	4.59
Dec-06	5.16
Jan-07	5.27
Feb-07	5.43
Mar-07	5.84
Apr-07	5.39
May-07	4.86
Jun-07	4.94
Jul-07	4.38
Aug-07	4.35
Sept-07	4.69
Oct-07	4.57
Nov-07	5.21
Dec-07	4.86
Jan-08	5.15
Feb-08	--

Diurnal Average Wind Speed Data

Hour of Day	Average Wind Speed [m/s]
0.5	5.07
1.5	5.1
2.5	5.07
3.5	5.08
4.5	5.15
5.5	5.16
6.5	4.99
7.5	5.04
8.5	5.15
9.5	5.14
10.5	5.23
11.5	5.26
12.5	5.33
13.5	5.31
14.5	5.31
15.5	5.22
16.5	4.81
17.5	4.68
18.5	4.63
19.5	4.61
20.5	4.8
21.5	4.89
22.5	4.93
23.5	4.94